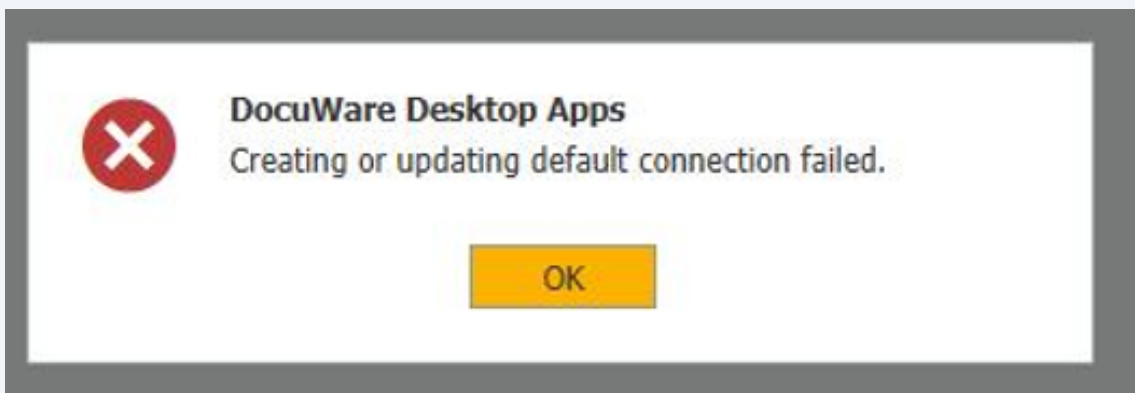


# Desktop apps Connection Error

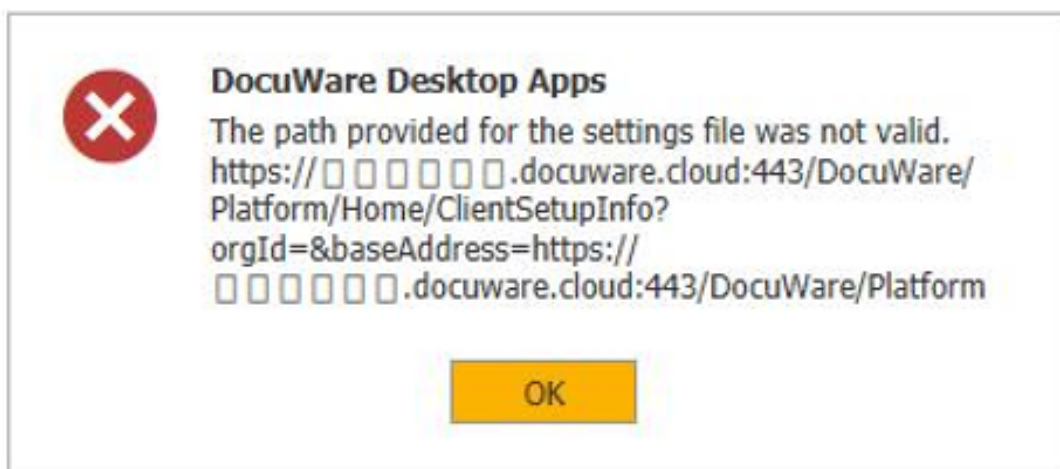
Q: What is the Settings Path and how can it be changed?

A: The Settings Path is the URL that Desktop Apps uses when connecting to DocuWare to create a default desktop apps connection and to install, update, or uninstall desktop apps. If this value is incorrect, the following errors may occur when completing these tasks:

## 1 "Creating or updating default connection failed."

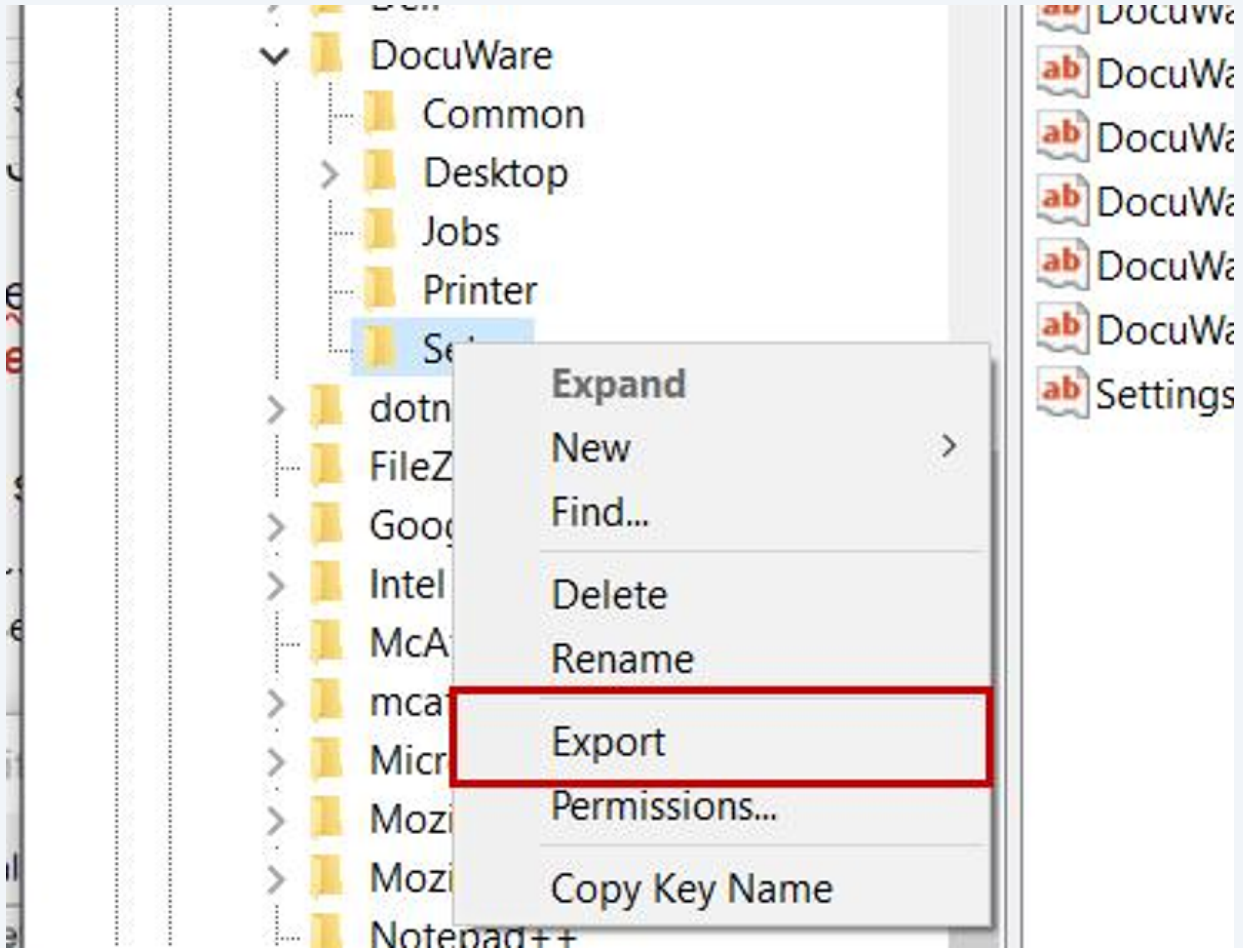


## 2 "The path provided for the settings file was not valid."



3

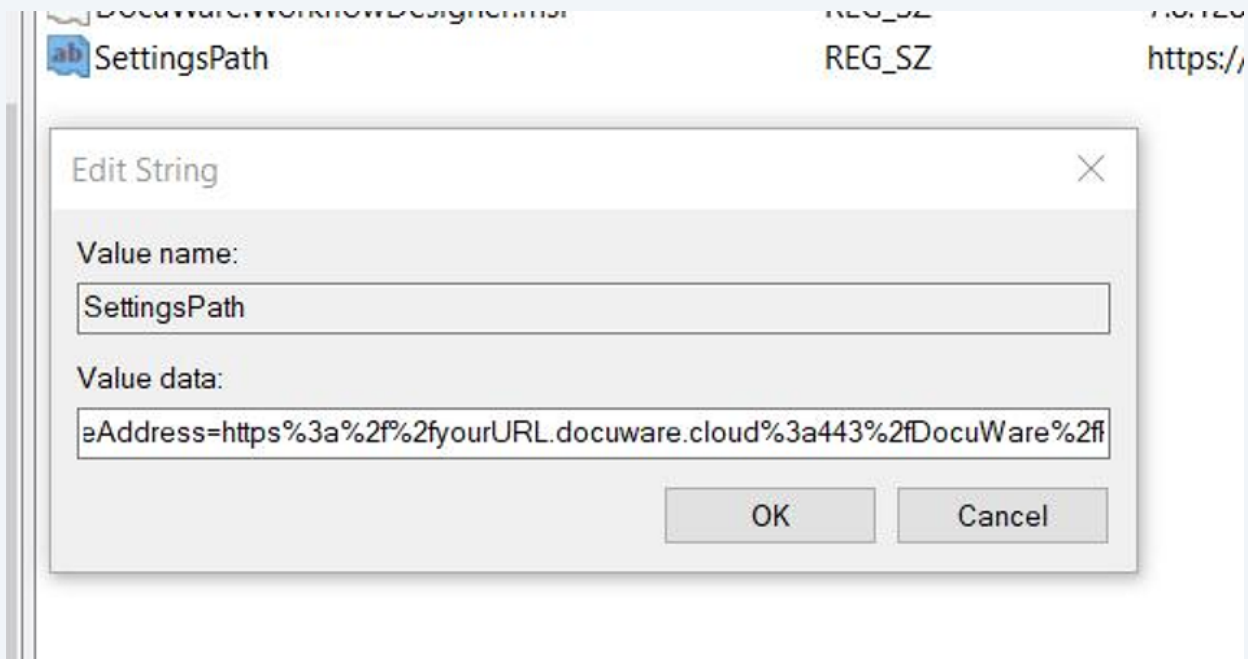
**The SettingsPath is set in the registry at the following location:** *Computer\HK  
EY\_LOCAL\_MACHINE\SOFTWARE\WOW6432Node\DocuWare\Setup* ( *Note: You will need  
administrator rights to update the registry* )



**Tip! Before making any changes, please right-click the setup folder and click export to save a backup of your existing registry keys.\*\*\***

4

There should be a value for SettingsPath saved already. Right-click this value and click modify to make any necessary changes to the URL.



5

Here is a basic template of how this URL should be formatted. Please replace YOUR\_DOCUWARE\_URL with your own URL:

**Cloud:**

[https://YOUR\\_DOCUWARE\\_URL.docuware.cloud:443/DocuWare/Platform/Home/ClientSetupInfo?orgId=&baseAddress=https%3a%2f%2fYOUR\\_DOCUWARE\\_URL.docuware.cloud%3a443%2fDocuWare%2fPlatform](https://YOUR_DOCUWARE_URL.docuware.cloud:443/DocuWare/Platform/Home/ClientSetupInfo?orgId=&baseAddress=https%3a%2f%2fYOUR_DOCUWARE_URL.docuware.cloud%3a443%2fDocuWare%2fPlatform)