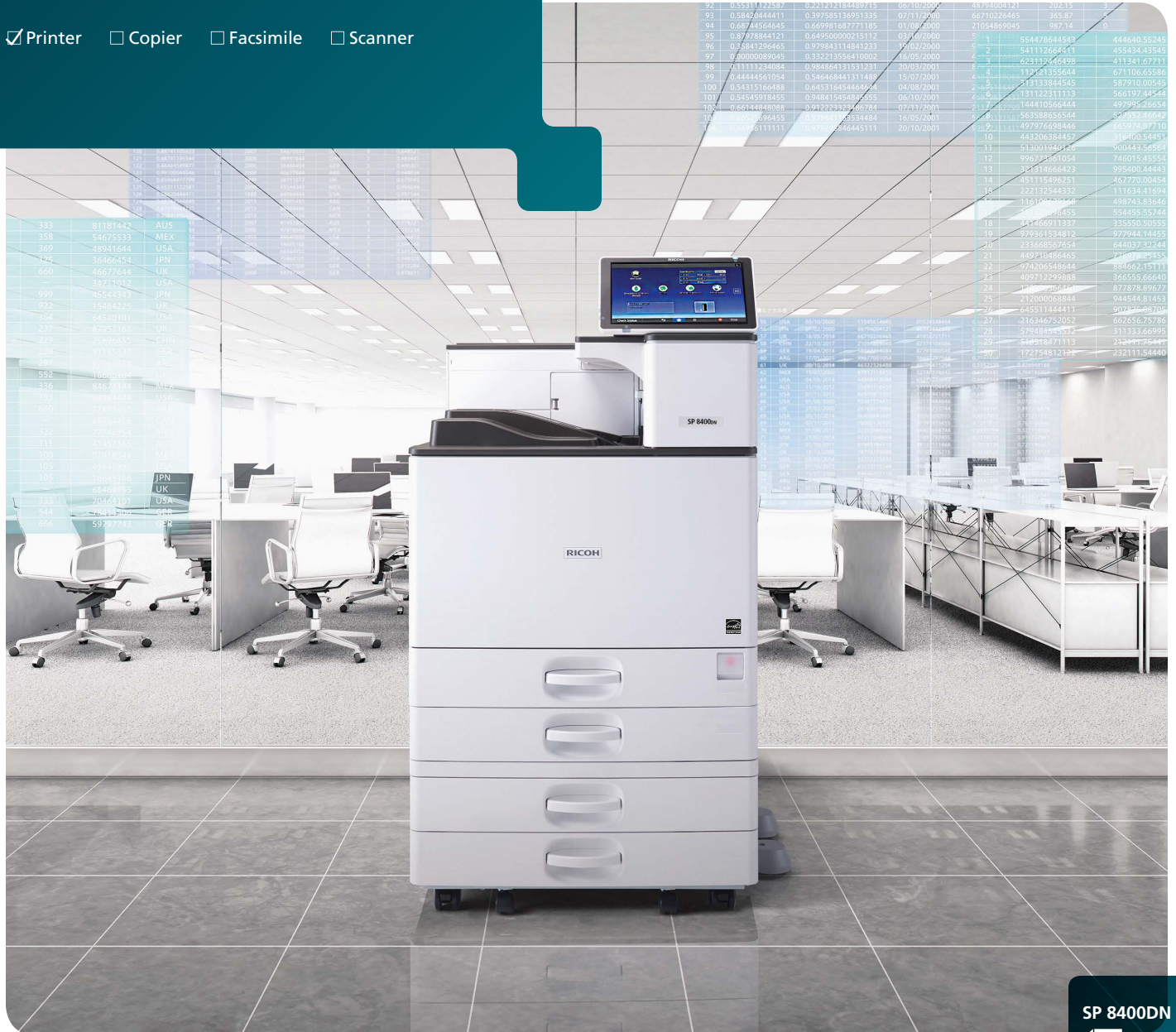


B&W Laser Printer

# RICOH SP 8400DN

Printer  Copier  Facsimile  Scanner

**RICOH**  
imagine. change.



SP 8400DN

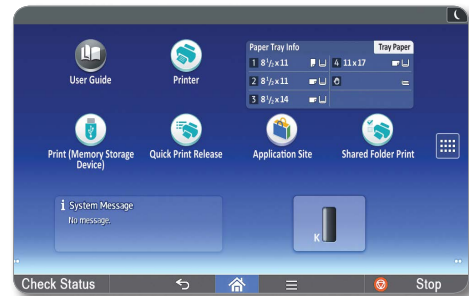
60 ppm monochrome

## Turn personalization into productivity

Choose the RICOH SP 8400DN laser printer when missing a deadline is not an option. Use it to reliably print high volumes of critical black-and-white documents, including medical records, statements, legal documents and much more, at high speeds without compromising quality. Designed with our Workstyle Innovation Technology, the printer offers customizable digital print workflows, and you can navigate between jobs with the same motions you use on a smartphone or tablet. Use it to add information-rich apps and widgets to the large Smart Operation Panel. Print directly from your mobile device. Grab attention via advanced finishing and folding options. Protect documents, data and devices with User Authentication and encryption tools. Plus, you can maintain maximum uptime with expansive paper capacity and a wide range of automated smart support capabilities.

## A more comfortable workflow

Experience many of the same advanced capabilities and workflows available on Ricoh multifunction printers (MFPs) with the SP 8400DN printer. Use our enhanced features to access information quickly on the oversized 10.1" Super VGA Smart Operation Panel (SOP). Add one-touch shortcuts and simplify everyday print workflows with a tap, swipe or scroll to reduce manual and repetitive steps. This intuitive second-generation display panel eliminates all hard keys. Every walk-up command is executed by touch and provides plenty of room for high-resolution graphics and easy page/thumbnail viewing that can be enlarged with a flick and pinch.



## Move information on the move

Don't let where you are limit what you can do. Download the RICOH Smart Device Connector app to your personal mobile device and connect to the SP 8400DN without software, utilities or drivers. In fact, the printer features Near Field Communication (NFC), so you connect by simply touching your device to the NFC tag or by reading a QR code on the control panel. Share images and files directly from your smartphone, tablet or cloud-based storage applications - such as Google Drive™, Box™ and Dropbox™. You can also use the embedded browser to download PDF documents for convenient printing without a computer.



## Be productive to the finish

Add your own finishing touch to get immediate attention. Print high-volume jobs on a wide range of paper stocks — including envelopes, thick postcards and more — with crisp, clear output at up to 1200 x 1200 dpi resolution. Choose from multiple finishing options to automate stapling, hole punching and other time-consuming tasks. You can output up to four different folds, including z-folds and tri-folds, with our unique Internal Multi-fold Unit and produce bulletins, billing statements, invoices and more in-house. No need to expand the footprint, so you can save on space while saving on outsourcing costs. With the 1,000-Sheet Hybrid Staple + Stapleless Finisher, produce staple-free document sets for childcare facilities or food-based industries.



# Accommodate a faster pace in less space

## Add volume, uptime and value

Critical information in many industries is time sensitive. The SP 8400DN offers the fast print speed of up to 60 black-and-white prints per minute. It has a powerful processor and 2 GB RAM for managing multiple jobs simultaneously. Expand paper capacity up to 4,700 sheets, including 11" x 17" sizes, with optional paper trays. Check the optional Attention Light to know whether your job has been interrupted. For operational assistance, download the How-To-Video app from our Application Site. IT and network administrators can use multiple "smart support" capabilities such as Remote Panel Operation to change settings over the LAN. When enabled, RemoteConnect Support allows support analysts to remotely connect with the printer over the Internet to diagnose and resolve issues through real-time screen sharing, remote guidance and operation.



## Keep information where it belongs

Ensure your audiences have important information when they need it most. With User Authentication, users login with a passcode or PIN or swipe an ID card on an optional NFC proximity card reader. As a result, you can track activity and set print quotas for specific users and workgroups, even in shared use environments. Add optional software, such as RICOH Device Manager NX Accounting, to issue chargebacks. With the 4-bin mailbox, you can print multiple jobs for different groups without worrying about mix-ups during retrieval. Guard against unauthorized access by closing unused network ports. There's also embedded encryption and overwrite tools to help protect data in transit or left on the hard drive.



## Put your energy to good use

Plan to reduce energy usage with the SP 8400DN. Set duplex printing as the default, or use User Authentication to designate it for specific individuals and workgroups. Take advantage of Sleep Mode to minimize energy costs even during office hours. The printer is ENERGY STAR<sup>®1</sup> certified and meets EPEAT<sup>®</sup> Gold<sup>2</sup> criteria. Its Typical Electricity Consumption (TEC) of 0.75 kWh/week is one of the lowest values among competitive devices in its category based on the ENERGY STAR certified product list.

<sup>1</sup> TEC value is measured based on the ENERGY STAR Ver. 3.0 test method.

<sup>2</sup> EPEAT Gold rating is applicable only in the USA.



To view detailed features of our laser printers online go to [www.ricoh-usa.com/products](http://www.ricoh-usa.com/products)



# RICOH SP 8400DN

## SYSTEM SPECIFICATIONS



Genuine Adobe® PostScript®3™ and PDF Direct from Adobe® are available as an option.

<b>Ricoh SP 8400DN Configuration Technology</b>	Part # 408244 Desktop Electro photographic printing system with laser beam
<b>Operation Panel</b>	10.1" Smart Operation Panel color touchscreen with integrated USB 2.0 host port and SD Card slot
<b>Resolution</b>	1200 x 1200 dpi
<b>Printing Speed</b>	60 pages-per-minute
<b>First Print Speed</b>	2.2 seconds
<b>Warm-Up Time</b>	21 seconds (from Main Switch On)
<b>Recovery from Sleep Mode</b>	7.0 seconds
<b>Standard Paper Capacity</b>	550-Sheet Paper Tray 1 550-Sheet Paper Tray 2 100-Sheet Bypass Tray (1,200 sheets standard capacity)
<b>Optional Paper Capacity</b>	550-Sheet x 2 Paper Feed Unit or 2,000-Sheet Large Capacity Tray (LCT); 1,500-Sheet Large Capacity Tray (LCT)
<b>Maximum Paper Capacity</b>	4,700 sheets
<b>Automatic Duplexing Paper Sizes</b>	Standard Standard Trays 1 and 2 and Optional Paper Feed Units: User adjustable up to 12" x 17" including (8.5" x 11"), (8.5" x 14"), Exec (10.5" x 7.25"), (11" x 17") Custom Sizes: 3.55" x 5.83" – 11.69" x 17" (90 x 148 mm to 297 x 431.8 mm) Envelopes for Tray 2: Com10, Monarch, C5, C6, DL; Envelopes for Optional Paper Feed Units: Com10, C5 Bypass Tray: User adjustable up to 12" x 18" including 5.5" x 8.5" to 11" x 17" (140 x 216 mm to 279 x 432 mm) Custom Sizes: 3.55" x 5.83" to 12" x 23.6" (90 x 148 mm to 305 x 600 mm) and Envelopes: Com10, Monarch, C5, C6, DL Optional 2,000-Sheet LCT and Optional 1,500-Sheet Side LCT: Fixed for (8.5" x 11") (216 x 279 mm) When Duplexing: 3.55" x 5.83" to 11.69" x 17" (90 x 148 mm to 297 x 431.8 mm)
<b>Paper Weights</b>	Std. Trays, Opt. PFU and LCTs: 16 – 82 lb. Bond/170 lb. Index (60 – 300 g/m <sup>2</sup> ) Bypass Tray: 14 – 82 lb. Bond/170 lb. Index (52 – 300 g/m <sup>2</sup> ) When Duplexing: 14 – 68 lb. Bond/140 lb. Index (52 – 256 g/m <sup>2</sup> )
<b>Paper Types</b>	All Sources: Plain Paper, Recycled Paper, Color Paper, Letterhead, Special Paper 1-3, Card Stock, Bond Paper, Preprinted Paper Envelopes: Com10 and C5 envelopes can be fed using Standard Trays, Bypass Tray and Optional Paper Feed Unit Bypass Tray Only: Labels, OHP Standard: 500 sheets, face down (8.5" x 11" or smaller); 250 sheets, face down (8.5" x 14" or larger) Maximum: Up to 4,000 sheets with Finisher, Bridge Unit and 4-Bin Mailbox
<b>Output Capacity</b>	23.1" x 25.7" x 28.3" (587 x 653 x 720 mm) (Main Unit only)
<b>Dimensions (WxDxH)</b>	125.6 lb. (57 kg) (Main Unit only) 120 – 127V, 60Hz, 12A Operating: 1600W or less Sleep Mode: 0.79W ENERGY STAR® certified 0.75 kWh/week Certified Gold
<b>Weight</b>	
<b>Power Requirements</b>	
<b>Power Consumption</b>	
<b>TEC Value</b>	
<b>ENERGY STAR®</b>	
<b>EPEAT®</b>	

### Print Controller Specifications (Standard)

<b>CPU</b>	Intel® Atom Processor BayTrail-1 1.46 GHz
<b>Memory</b>	Standard/Maximum: 2 GB/2 GB
<b>Hard Disk Drive</b>	320 GB (optional)
<b>Printer Languages</b>	Standard: PCL5e, PCL6, PostScript3 emulation, PDF Direct Print emulation, Media Print (JPEG/TIFF), RPCS Optional: Genuine Adobe® PostScript®3™, PDF Direct from Adobe®, XPS Standard: PS3/PDF/PCL emulation – 80 Roman fonts + 13 International fonts Optional: Genuine Adobe PS3/PDF Direct – 136 Roman fonts
<b>Standard Interfaces</b>	10Base-T/100Base-TX/1000Base-T Gigabit Ethernet, High Speed USB, Dual USB Host Type A, USB 2.0 Type A/SD Card Slot integrated into Smart Operation Panel (for Print from Portable Media)

<b>Optional Interfaces* Network Protocols</b>	USB 2.0 Port, IEEE 1284, IEEE 802.11a/b/g/n Standard: TCP/IP (IPv4, IPv6)
<b>Operating Systems</b>	Windows Vista/7/8.1/10/Server 2008/Server 2008R2/Server 2012/Server 2012R2/Server 2016 Citrix Presentation Server 4.5, Citrix XenApp 5.0+ Mac OS X v.10.9 or later, SAP R/3, UNIX (using Ricoh UNIX filter) Sun Solaris 9/10, HP-UX 11.x/11i v2/11i v3, SCO OpenServer 5.0.7/6.0, RedHat Linux Enterprise V4/V5/V6, IBM AIX 5L version 5.3/6.1/7.1
<b>Printer Features</b>	Bonjour Support, Windows Active Directory Support, DDNS Support, PCL Resident Font Adoption, Tray-Parameter Change from Web Image Monitor, 1200 dpi Support, Universal Driver, XPS Support, WS Printer, Wireless LAN Interface Option, Media Direct Print (Print from USB/SD), Poster Print, WPS Support Device Manager NX Series, Web Image Monitor, @Remote
<b>Utilities</b>	

\*Only one interface can be installed.

### Controller and Memory Options

IEEE802.11a/g/n Interface Unit Type M19, IEEE1284 Interface Board Type M19, VM Card Type P13, XPS Direct Print Option Type P13, IPDS Unit Type P13\*, HDD Option Type P13, Genuine Adobe PostScript3 Type P13

### Security Features

DataOverwriteSecurity System (DOSS), Authentication (Windows/LDAP/Kerberos/Basic/User Code/802.1x Wired), Wireless LAN Security (WPS/IEEE802.11i/IEEE802.11w), Encryption (Address Book/Authentication Password/SSL Communication/S/MIME/IPsec Communication/HDD/SMTP over SSL/TLS/Transport Layer Security/SSH/Wireless LAN), Locked Print, Network Protocols ON/OFF, IP Address Filtering, Quota Setting/Account Limit, Compulsory Security Stamp, Unauthorized Copy Prevention and Mask Type for Copying

### Hardware Accessories

<b>550 x 2 Paper Feed Unit (PB3240)*</b>	
<b>Paper Capacity</b>	1,100 sheets
<b>Paper Sizes</b>	3.55" x 5.83" – 12.6" x 18" (A5 – A3)
<b>Paper Weights</b>	16 – 82 lb. Bond/170 lb. Index (60 – 300 g/m <sup>2</sup> )
<b>Dimensions (WxDxH)</b>	23.1" x 27" x 9.7" (587 x 685 x 247 mm)
<b>2,000-Sheet Large Capacity Tray (LCT PB3260)*</b>	
<b>Paper Capacity</b>	2,000 sheets
<b>Paper Sizes</b>	8.5" x 11" (A4)
<b>Paper Weights</b>	16 – 82 lb. Bond/170 lb. Index (60 – 300 g/m <sup>2</sup> )
<b>Dimensions (WxDxH)</b>	23.1" x 27" x 9.7" (587 x 685 x 247 mm)
<b>1,500-Sheet Side Large Capacity Tray (LCT RT3030)*</b>	
<b>Paper Capacity</b>	1,500 sheets
<b>Paper Sizes</b>	8.5" x 11" (A4)
<b>Paper Weights</b>	16 – 82 lb. Bond/170 lb. Index (60 – 300 g/m <sup>2</sup> )
<b>Dimensions (WxDxH)</b>	13.4" x 21.4" x 11.4" (340 x 544.5 x 290 mm)

\*Requires configuration with 550 x 2 Paper Feed Unit (PB3240) or 2,000-Sheet Large Capacity Tray (PB3260). Cannot be installed with Cabinet Type F.

### Large Cabinet Stand (Cabinet Type F)\*

The Large Cabinet Stand must be selected when the printer main unit is to be configured with a Finisher, but not a paper supply option.

### 3,000-Sheet Finisher (SR3230)<sup>234</sup>

<b>Modes</b>	Shift, Sort, Stack, Staple, Optional Hole Punch
<b>Paper Size</b>	Proof Tray: 5.5" x 8.5" to 12" x 18" (A6 – A3) Shift Tray: 5.5" x 8.5" to 12" x 18" (A6 – A3)
<b>Paper Weight</b>	Proof Tray: 16 – 58 lb. Bond/122 lb. Index (60 – 220 g/m <sup>2</sup> ) Shift Tray: 14 – 80 lb. Bond/166 lb. Index (52 – 300 g/m <sup>2</sup> )
<b>Stack Capacity</b>	Proof Tray: 250 sheets (8.5" x 11" or smaller) (A4); 50 sheets (8.5" x 14" or larger) (B4) Shift Tray: 3,000 sheets (8.5" x 11") (A4); 1,500 sheets (8.5" x 14" or larger) (B4) 50 sheets (8.5" x 11" to 11" x 17")
<b>Staple Capacity</b>	8.5" x 11" to 11" x 17"
<b>Staple Paper Size</b>	14 – 28 lb. Bond (52 – 105 g/m <sup>2</sup> )
<b>Staple Paper Weight</b>	Top, Bottom, 2 Staples, Top Slant
<b>Staple Positions</b>	5,000 staples/cartridge
<b>Staple Cartridge Capacity</b>	25.9" x 24.1" x 37.8" (657 x 613 x 960 mm)
<b>Dimensions (WxDxH)</b>	74 lb. (33.5 kg)
<b>Weight</b>	

<b>1,000-Sheet Hybrid Staple + Stapleless Finisher (SR3210)<sup>234</sup></b>	
<b>Paper Size</b>	Proof Tray: 5.5" x 8.5" to 12" x 18" Shift Tray: 5.5" x 8.5" to 12" x 18"
<b>Paper Weight</b>	Proof Tray: 14 – 45 lb. Bond/93 lb. Index (52 – 169 g/m <sup>2</sup> ) Shift Tray: 14 – 80 lb. Bond/166 lb. Index (52 – 300 g/m <sup>2</sup> )
<b>Stack Capacity</b>	Proof Tray: 250 sheets (8.5" x 11") (A4); 50 sheets (8.5" x 14" or larger) (B4) Shift Tray: 1,000 sheets (8.5" x 11") (A4); 500 sheets (8.5" x 14" or larger) (B4)
<b>Stapleless Capacity</b>	2 – 5 sheets/set
<b>Staple Capacity</b>	50 sheets (8.5" x 11"), 30 sheets (8.5" x 14" or larger)
<b>Staple Paper Size</b>	8.5" x 11" to 12" x 18"
<b>Staple Paper Weight</b>	14 – 28 lb. Bond (52 – 105 g/m <sup>2</sup> )
<b>Staple Positions</b>	Top, Bottom 2 Staples
<b>Dimensions (WxDxH)</b>	25.4" x 24.4" x 37.8" (646 x 620 x 960 mm)
<b>Weight</b>	60 lb. (27 kg)
<b>Mailbox CS3010*</b>	
<b>Number of Bins</b>	4
<b>Capacity Per Bin</b>	125 sheets x 4 trays = 500 sheets
<b>Paper Size</b>	3.55" x 5.83" to 11.69" x 17" (A3, A4, A5, A6)
<b>Paper Weight</b>	14 – 45 lb. Bond/90 lb. Index (52 – 169 g/m <sup>2</sup> )
<b>Dimensions (WxDxH)</b>	21.9" x 21.4" x 19.9" (555 x 544 x 506 mm)
<b>Weight</b>	28.7 lb. (13 kg)

\*The Mailbox CS3010 can be installed by itself or simultaneously with either Finisher, the Attention Light or the paper supply options.

<b>2/3-Hole Punch Unit (PU3050NA)</b>	
<b>(Optional; Installs inside SR3210 Finisher)</b>	
<b>Punch Paper Sizes</b>	5.5" x 8.5" to 11" x 17"
<b>Punch Paper Weight</b>	14 – 68 lb. Bond/142 lb. Index (52 – 256 g/m <sup>2</sup> )

\*Can be added with or without an external finisher.

<b>2/3-Hole Punch Unit (PU3060NA)</b>	
<b>(Optional; Installs inside SR3230 Finisher)</b>	
<b>Punch Paper Sizes</b>	5.5" x 8.5" to 11" x 17"
<b>Punch Paper Weight</b>	14 – 68 lb. Bond/142 lb. Index (52 – 256 g/m <sup>2</sup> )

<b>Internal Multi-fold Unit (FD3000)*</b>	
<b>Folding Type</b>	Z-Fold, Half-Fold, Outer Tri-Fold, Inner Tri-Fold
<b>Paper Size</b>	Z-Fold, Half-Fold - A3, B4, A4, DLT, LG, LT, 8k, (Only FD3000 Multi-fold Unit) 8.5" x 13.4" (Oficio) Outer or Inner Tri-Fold - A3, A4, DLT, LG, LT, 8.5" x 13.4" (Oficio) Z-Fold - A3, B4, A4, DLT, LG, LT, 8k, 8.5" x 13.4"

\*Can be added with or without an external finisher.

<b>Bridge Unit Type BU3070*</b>	
<b>The Bridge Unit (BU3070) is a required accessory when the main unit is to be configured with any Finisher.</b>	
<b>Sheet Capacity</b>	250 sheets (8.5" x 11" or smaller), 125 sheets (8.5" x 14" or larger)

\*If configured, the Internal Multi-fold Unit serves the same purpose as the Bridge Unit.

### Additional Accessories

Attention Light AL3000, External NFC Card Reader Bracket Type P11, NFC Card Reader Type P11, Output Jogger Unit Type M15

### Supplies

Consumables	Yield	Part #
<b>Black Toner SP 8400A</b>	51,000*	821276
<b>Printer Maintenance Kit A</b>	160,000	408107
	(contains Drum Unit, Transfer Unit and Waste Toner Bottle)	
<b>Printer Maintenance B Kit</b>	320,000	408108
	(contains Fusing Unit)	
<b>Staple Set Type T for SR3210/SR3230 Finisher</b>	5,000/carton	415009
<b>Staple Refill Type T for SR3210/SR3230 Finishers</b>	10,000/carton	415010

\*Declared yield values in accordance with ISO/IEC 19798.

1 One of the following options must be installed: Cabinet type F, PB3240 or LCT PB3260.

2 Requires configuration with Bridge Unit BU3070 or Internal Multi-fold Unit FD3000.

3 Cannot be installed together.

4 Requires installation of Two-Tray Paper Bank (PB3240), Cabinet Type F or Tandem Large Capacity Tray (PB3260).

Some options may not be available at the time of market release.

Specifications are subject to change without notice.

For maximum performance and yield, we recommend using genuine Ricoh parts and supplies.



www.ricoh-usa.com

Ricoh USA, Inc., 300 Eagleview Boulevard, Exton, PA 19341, 1-800-63-RICOH

©2019 Ricoh USA, Inc. All rights reserved. Ricoh® and the Ricoh logo are registered trademarks of Ricoh Company, Ltd. All other trademarks are the property of their respective owners. The content of this document, and the appearance, features and specifications of Ricoh products and services are subject to change from time to time without notice. Products are shown with optional features. While care has been taken to ensure the accuracy of this information, Ricoh makes no representation or warranties about the accuracy, completeness or adequacy of the information contained herein, and shall not be liable for any errors or omissions in these materials. Actual results will vary depending upon use of the products and services, and the conditions and factors affecting performance. The only warranties for Ricoh products and services are as set forth in the express warranty statements accompanying them.

R3841-2