



Installing Ricoh Driver for Windows 8



Items you need to know

- IP address of Printer (#1 on the following page)
- Options that are installed And Paper Sizes (#2 on the following page)
- To get all this information you can print a configuration page from the Copier.
 - Hit User Tools, Machine Features (if present)
 - Then Printer Features
 - Then Configuration Page

Configuration Page

RICOH Aficio MP C3000

System Reference

Unit Number L3785600595 Pages Printed 47062
 Total Memory 1024 MB
 Firmware Version Printer[1.12 / B7885601K], System[1.69 / B2385601V], Engine[V1.131:01 / B2385630L], LCDC[1.18 / B2381491A], NIB[5.17 / B2385605H]
 Device Connection IEEE 802.11b
 HDD: Font / Macro Download Free Space 509908 KB , Disk Capacity 510446 KB
 Printer Language RPCS [3.3.22.3.4], PCL 5c [1.13], PCL XL [1.13], Adobe PostScript 3 [1.00], Adobe PDF [1.00]

2

Connection Equipment

Consumption Status
 Black Toner Remaining: [■■■■ ■■■■], Cyan Toner Remaining: [■■■■ ■■■■],
 Magenta Toner Remaining: [■■■■ ■■■■], Yellow Toner Remaining: [■■■■ ■■■■]

Paper Input

Tray Priority Tray 1
 Bypass Tray 8 1/2 x 11 Plain Paper Tray Locked Duplex Unavailable
 Tray 1 11 x 8 1/2 Plain Paper
 Tray 2 11 x 17 Plain Paper

Maintenance

4 Color Graphic Mode Photo Priority

System

*On * indicates a non-default setting.
 Print Error Report *On
 Memory Overflow Do not Print
 Hours to Delete 8
 Days to Delete 3
 Memory Usage Frame Priority
 Copies 1
 Reserved Job Waiting Time Short Wait
 Sub Paper Size Off
 Letterhead Setting Off
 Edge to Edge Print Off
 Tray Switching Off
 Auto Continue Off
 Auto Del. Temp. Print Jobs Off
 Auto Del Stored Print Jobs On
 Initial Print Job List *List Per User ID
 Duplex Off
 Blank Page Print On
 Printer Language Auto
 Page Size 8 1/2 x 11
 Bypass Tray Setting Priority *Machine Settings
 Default Printer Language PCL

PCL Menu

Orientation Portrait Form Lines *45
 Font Source Resident Font Number 0
 Point Size 12.00 Font Pitch 10.00
 Symbol Set PC-8 Courier Font Regular
 Extend A4 Width Off Append CR to LF Off
 Resolution *300 dpi

PS Menu

Data Format TBCP Resolution 600 dpi (Fast)
 Color Setting Super Fine Color Profile Auto

PDF Menu

Resolution 600 dpi (Fast)
 Color Profile Auto Color Setting Super Fine

Host Interface

I/O Buffer 128 KB I/O Timeout 15 seconds
 DHCP On IP4 Address 192.168.002.184 (011.022.033.044)
 Sub-net Mask 255.255.000.000 (008.000.000.000) Gateway Address 192.168.001.013 (000.000.000.000)
 IPv6 Stateless Autoconfig. Active Frame Type (NW) Auto
 IPv4 Active IPv6 Inactive
 NetWare *Inactive SMB Active
 AppleTalk Active Ethernet Speed Auto Select
 LAN Type Ethernet Communication Mode *Infrastructure
 Selected SSID MetroSales Channel 11
 Transmission Speed Auto Security Type Off
 WPA Encryption Method TKIP WPA Authentication Method WPA-PSK

1

Interface Information

MAC Address 00.00.74.ae.3e.e1 Host Name RNPAE3EE1
 Operation Mode (NetWare) Print Server RNPAE3EE1
 File Server Name (NetWare) Not Defined NDS Context Name (NetWare) Not Defined
 Workgroups Name (SMB) WORKGROUP Network Path Name (SMB) \\RNPAE3EE1\MP3000
 IEEE 802.11b 00.00.74.bb.62.35
 Invalid Interface Not Detected



Software you need

Drivers for the machine can be downloaded from Ricoh's Website:

<http://www.ricoh-usa.com>

Enter the numeric model number in the search box.

Specify your Operating System.

Choose a PCL 5 or 6 driver unless you know that you need a Postscript driver

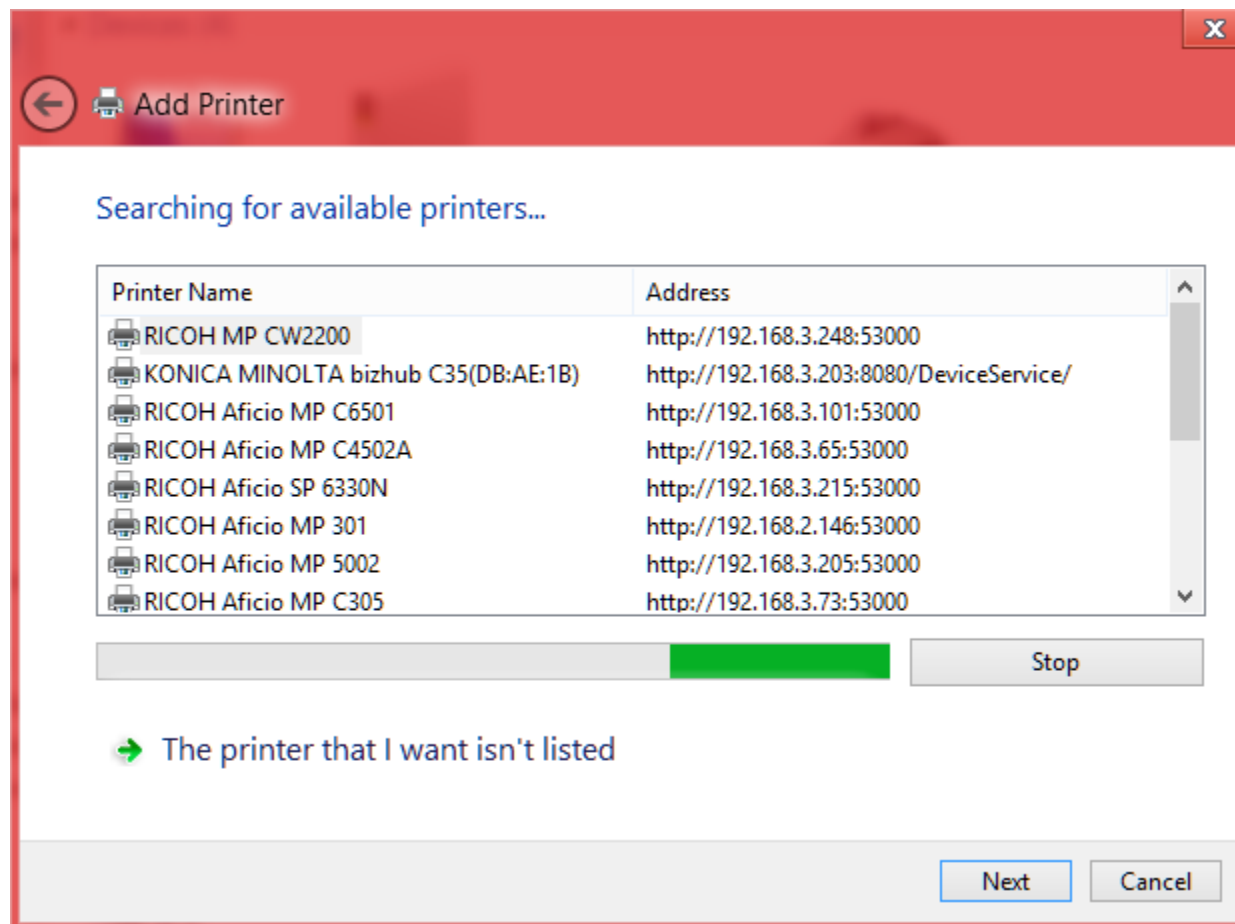
When Downloading drivers from the web you must run the downloaded file to extract the driver for use. Remember where you put them you will need this information later.



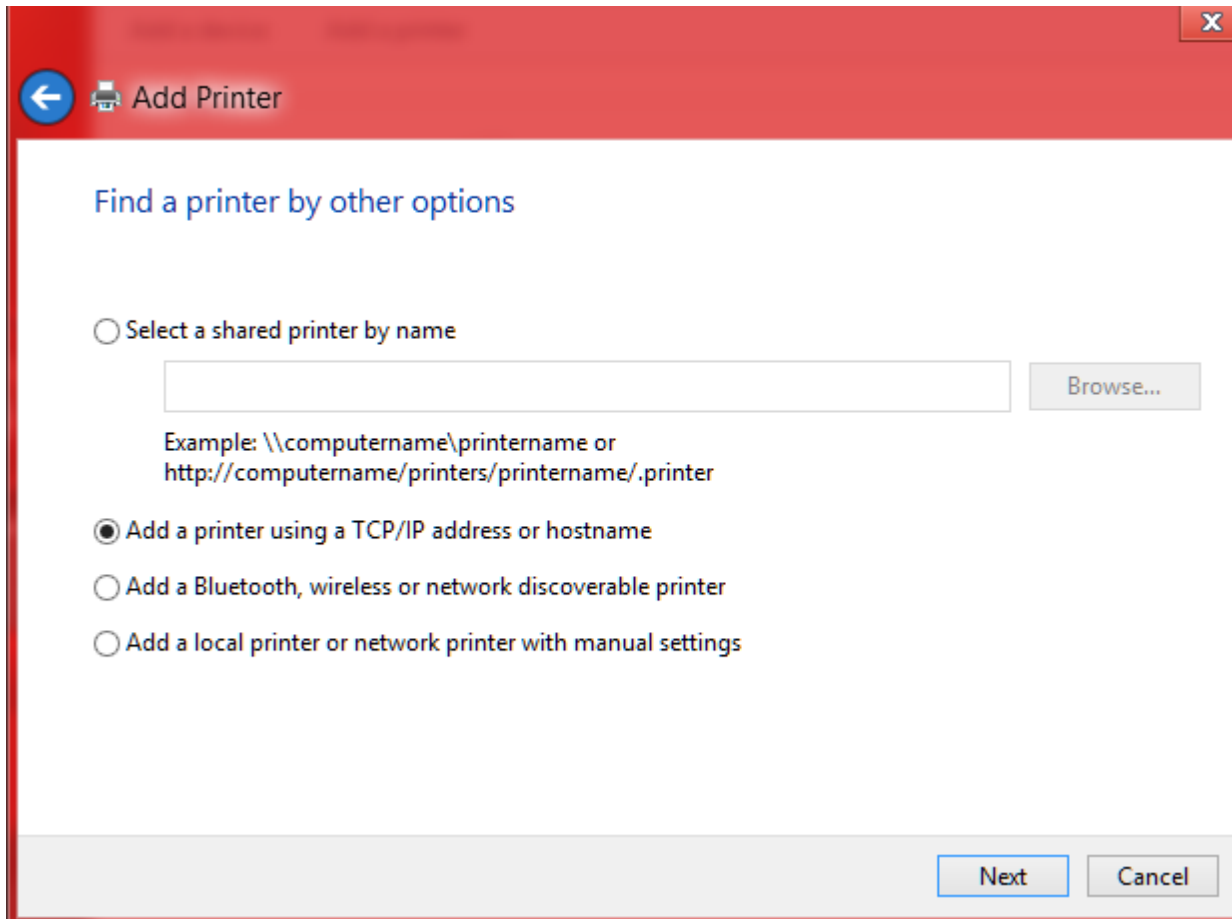
Next Start the Add Printer Wizard

- Hold the Windows key and press the "x" key.
- Then select Control Panel
- Then select View devices and printers
- Then select Add a printer at the top of the screen

On the following slides follow the notes on the side bar, Or select the buttons that are in the red boxes.



Click "Stop", then "The printer that I want isn't listed."



Select "Add a printer using a TCP/IP address or hostname"

← Add Printer

Type a printer hostname or IP address

Device type: TCP/IP Device

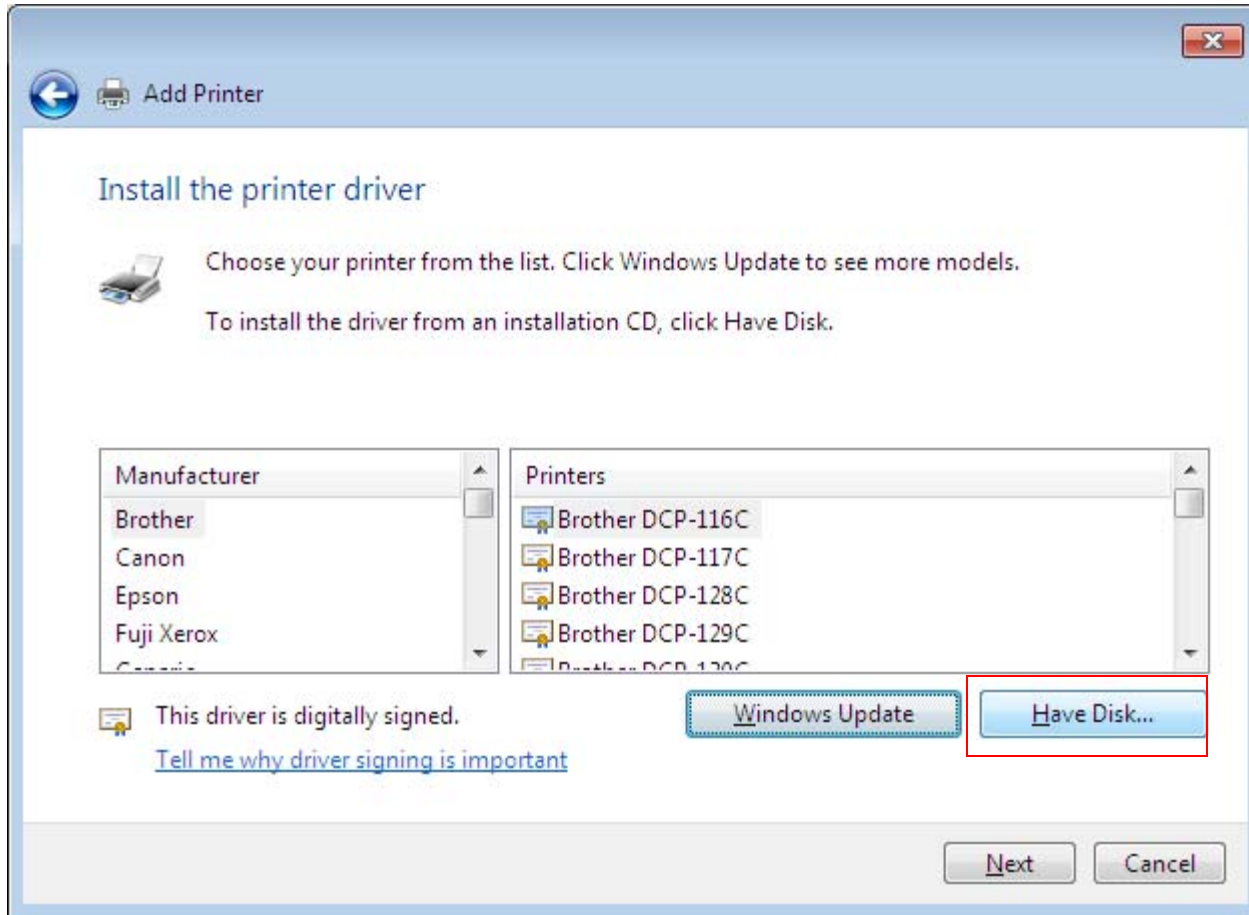
Hostname or IP address:

Port name:

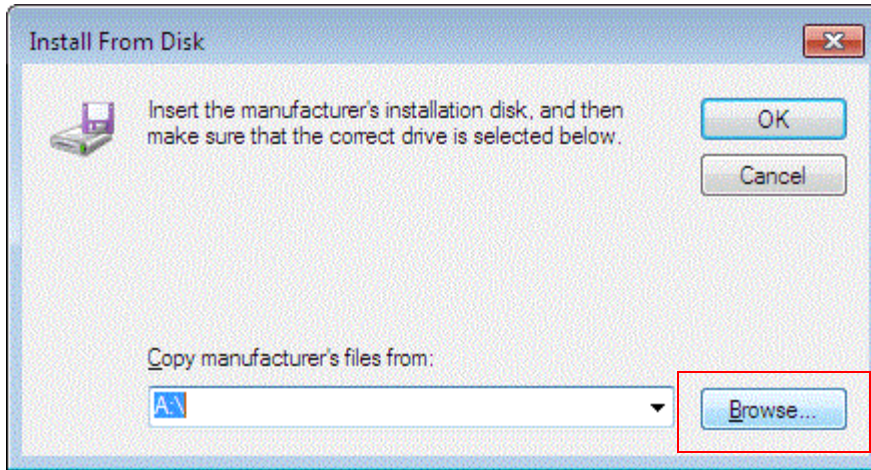
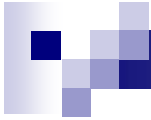
Query the printer and automatically select the driver to use

Next Cancel

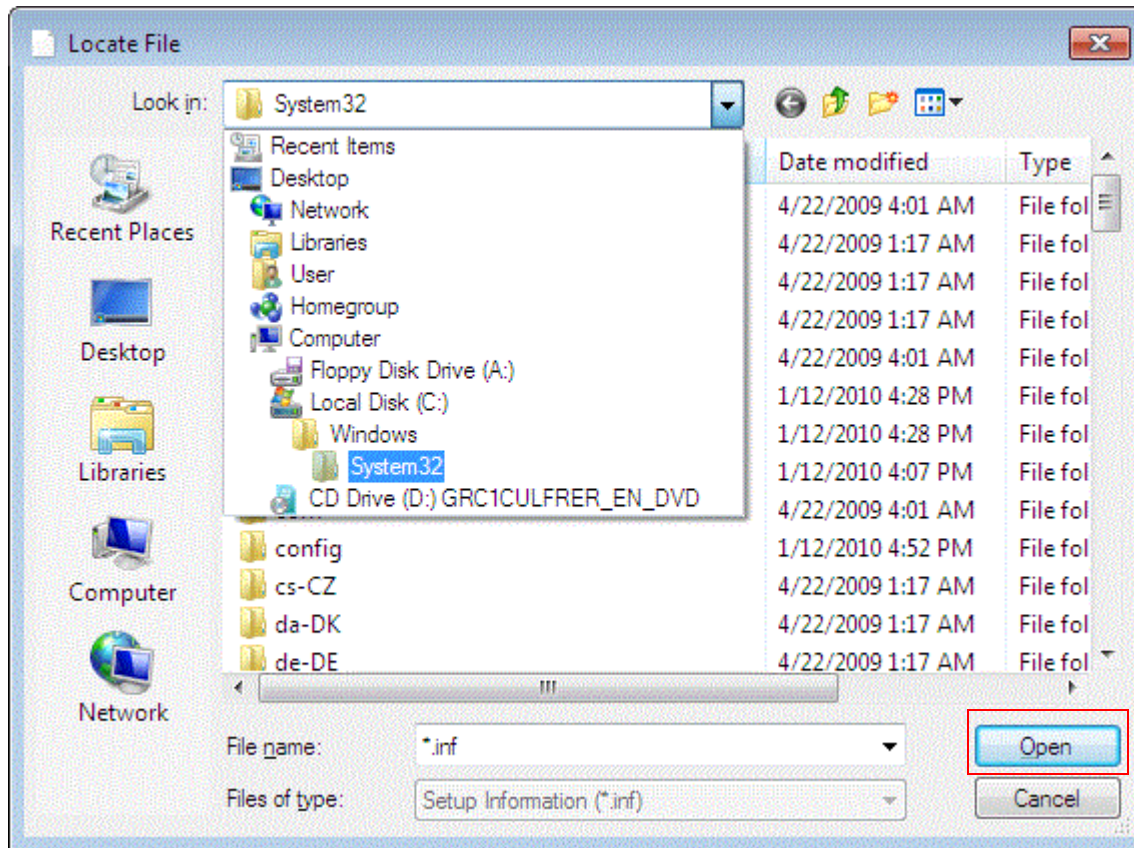
In the Hostname or IP address field type in the IPv4 address from the configuration Page (#1). The Port name field will automatically fill and be sure the "Query the printer" box is unchecked.



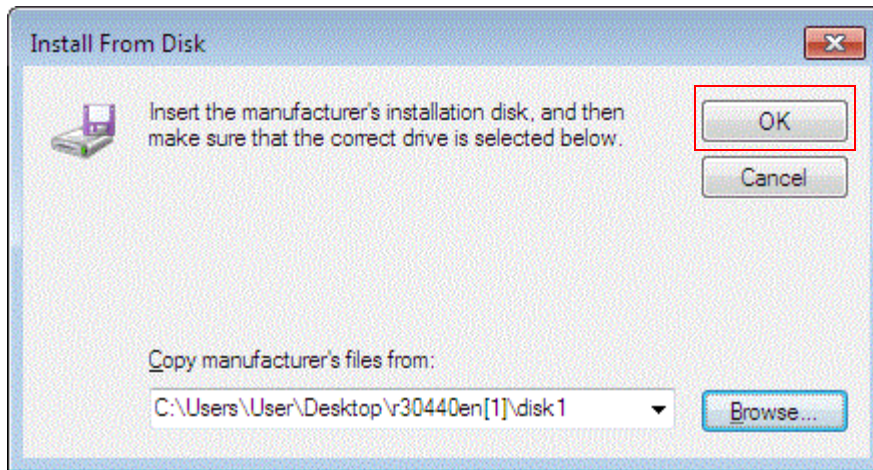
Click on Have Disk...



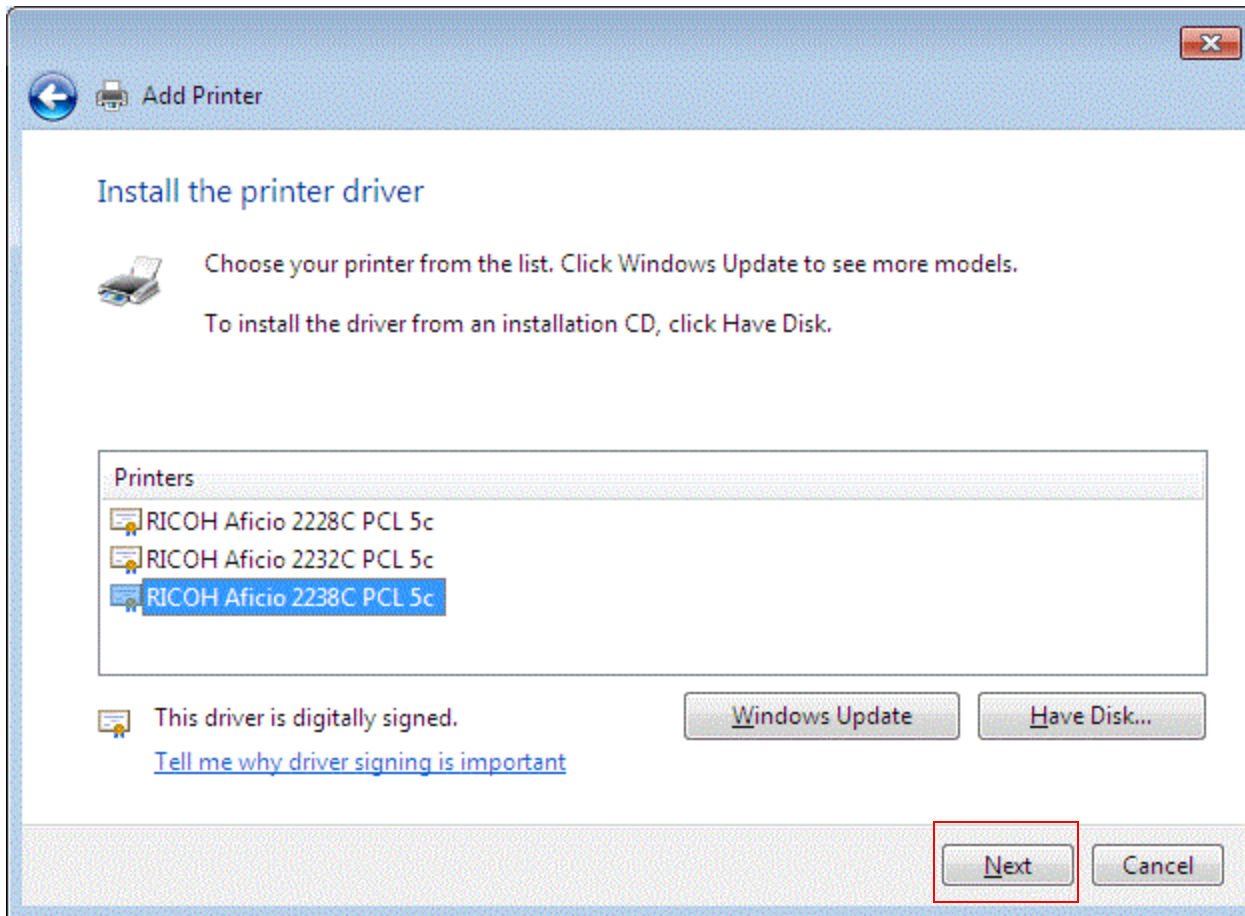
Click on Browse...



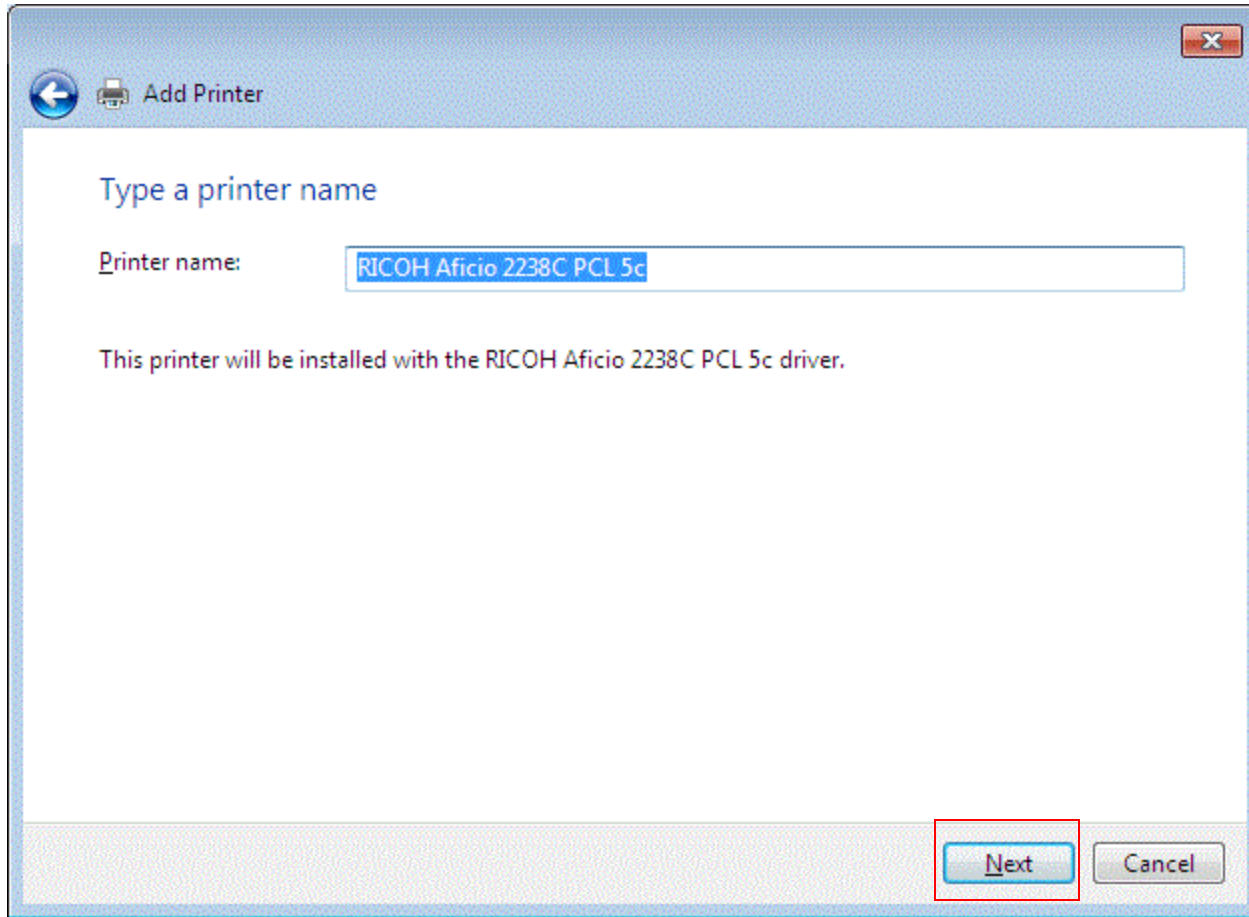
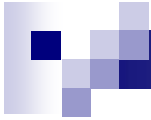
Browse to the location you extracted the driver to after you downloaded and ran it. When you have found the location of the driver Hit the Open Button.



Click on OK



Choose the model that corresponds to your Ricoh and click Next.



Name the printer whatever you want and click Next.

Add Printer

Printer Sharing

If you want to share this printer, you must provide a share name. You can use the suggested name or type a new one. The share name will be visible to other network users.

Do not share this printer

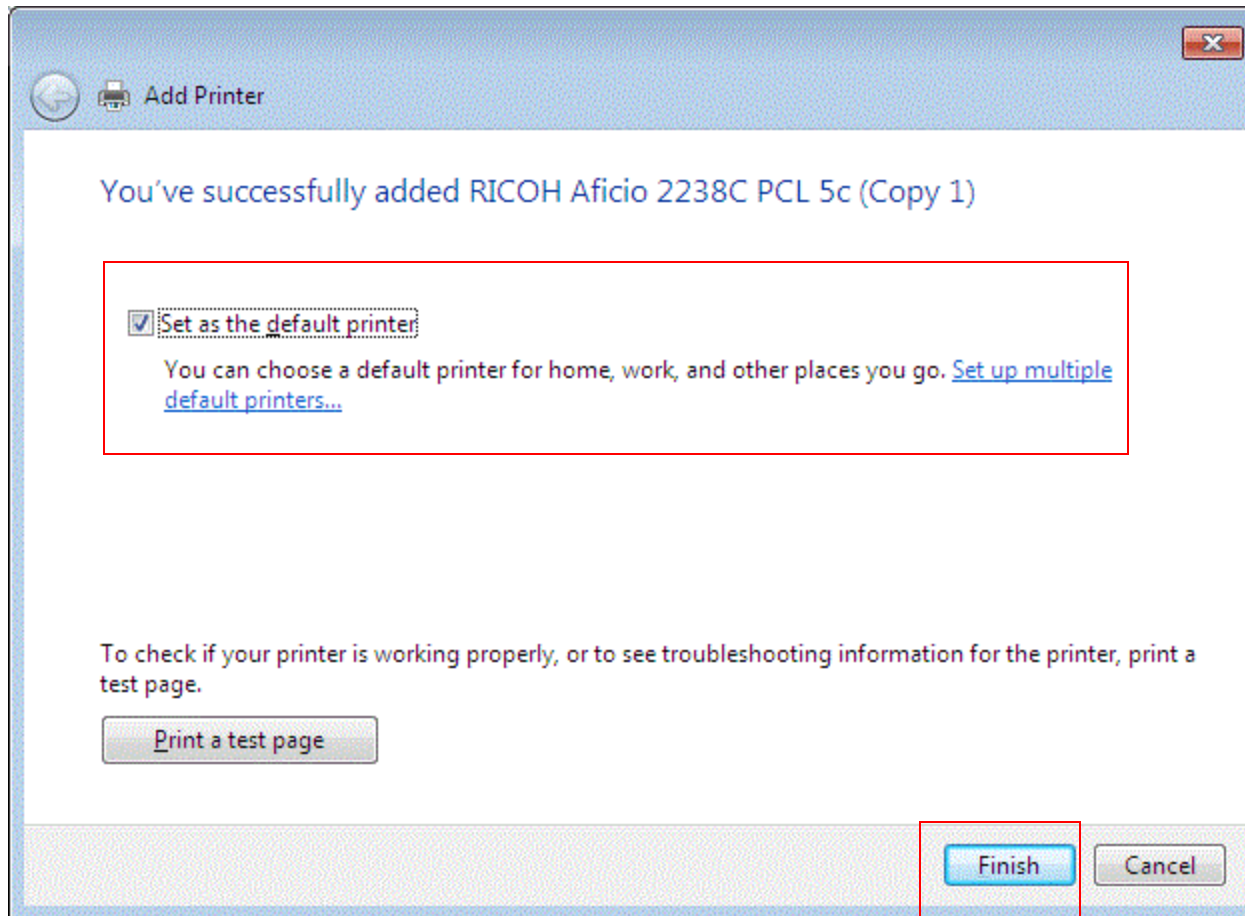
Share this printer so that others on your network can find and use it

Share name:

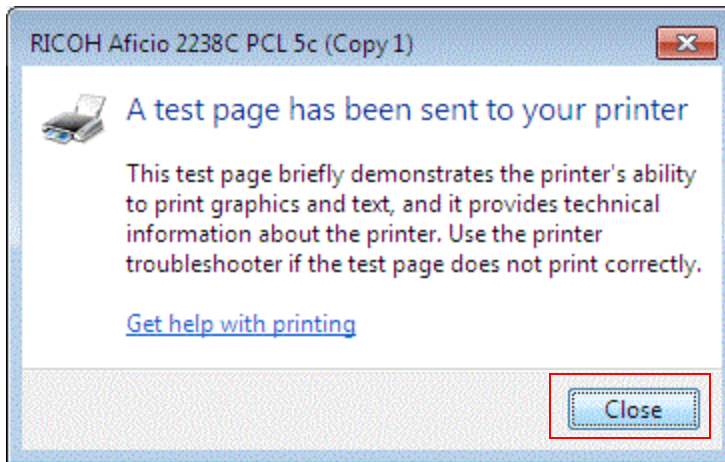
Location:

Comment:

Click the radio button next to Do not share this printer and click Next.



If you want this set as your default printer make sure the box near the top is checked and click Finish.

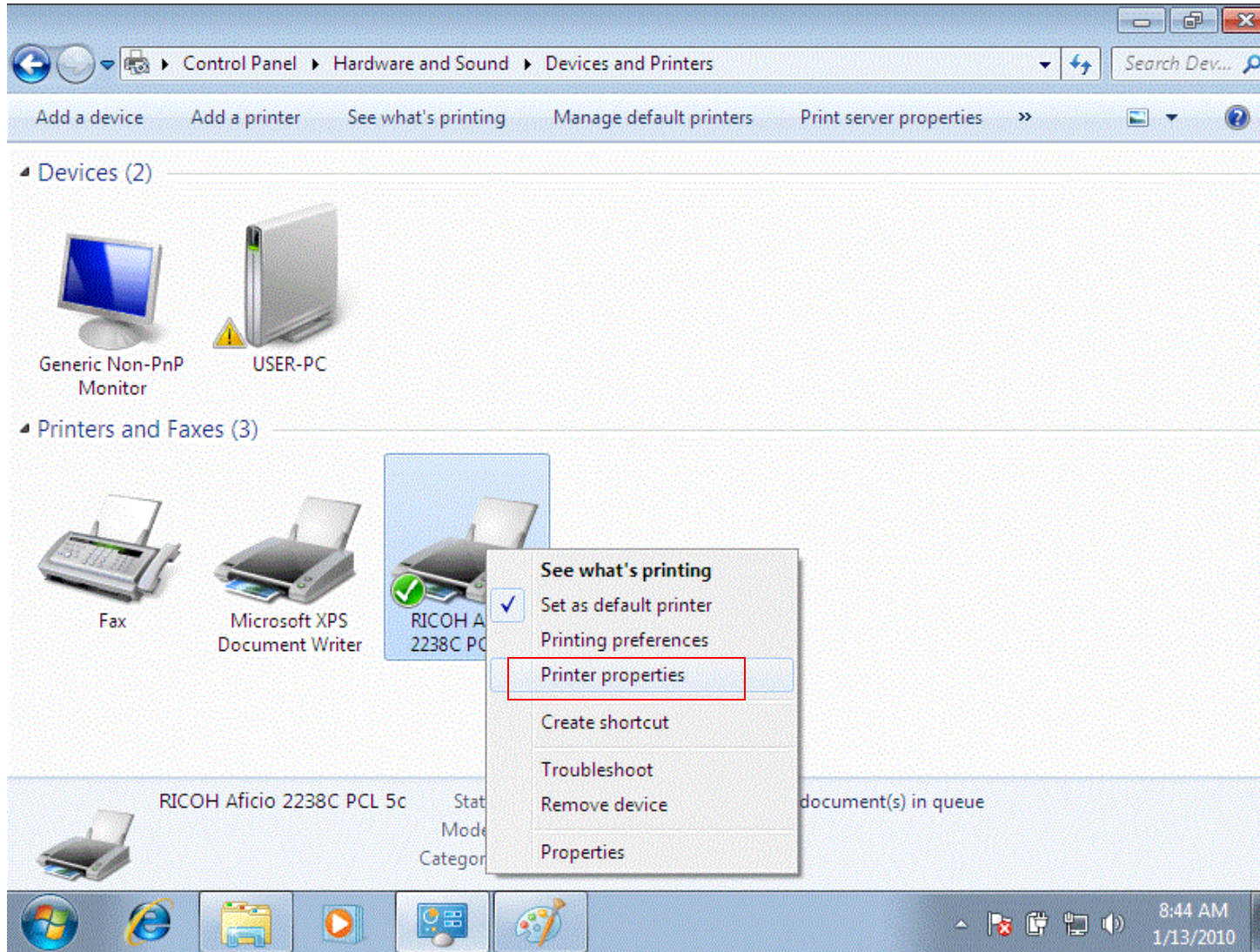


If you chose to print test page you will get a confirmation box looking like this one, click Close to proceed.

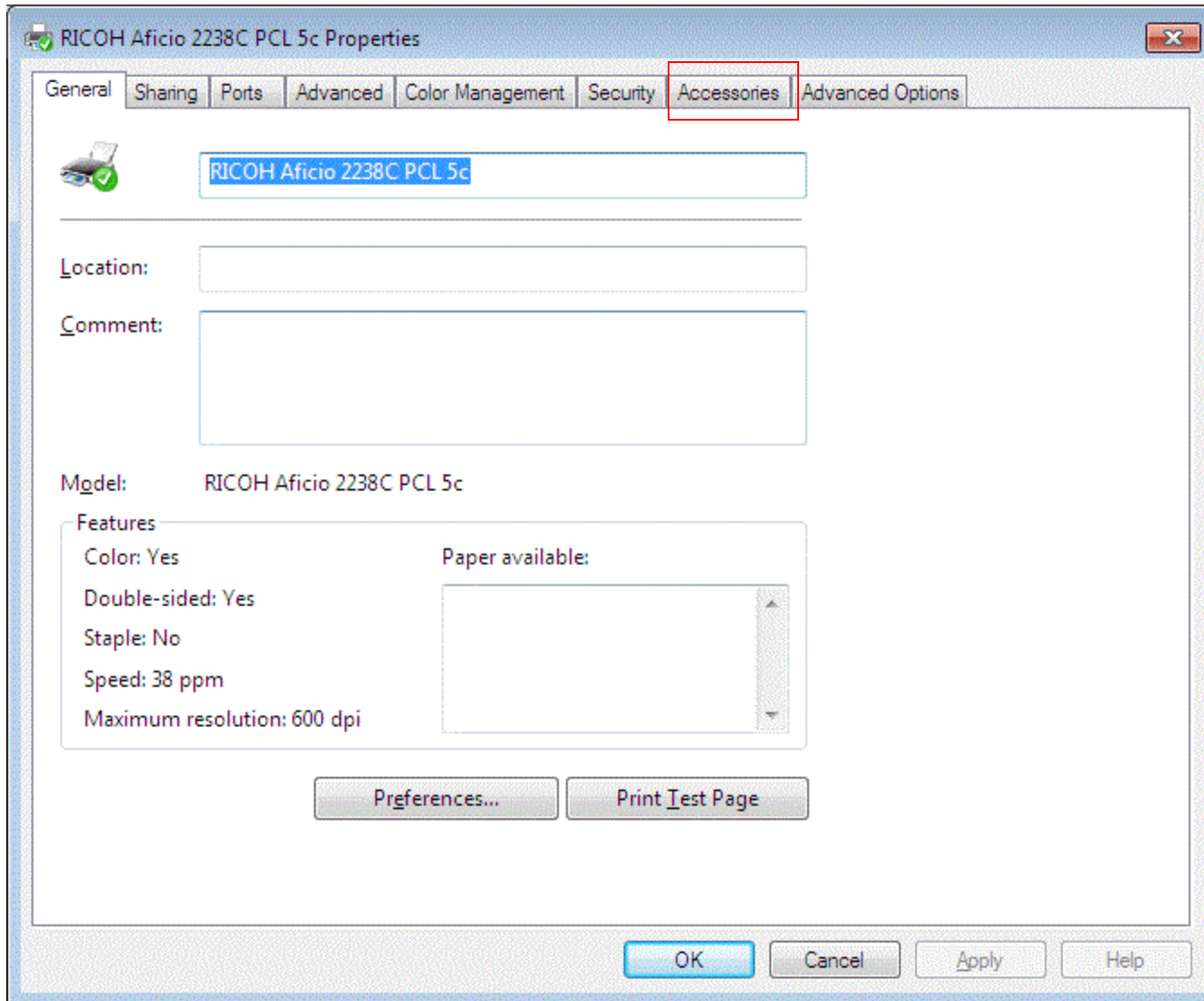
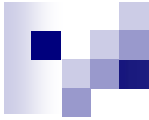


Configuring Options

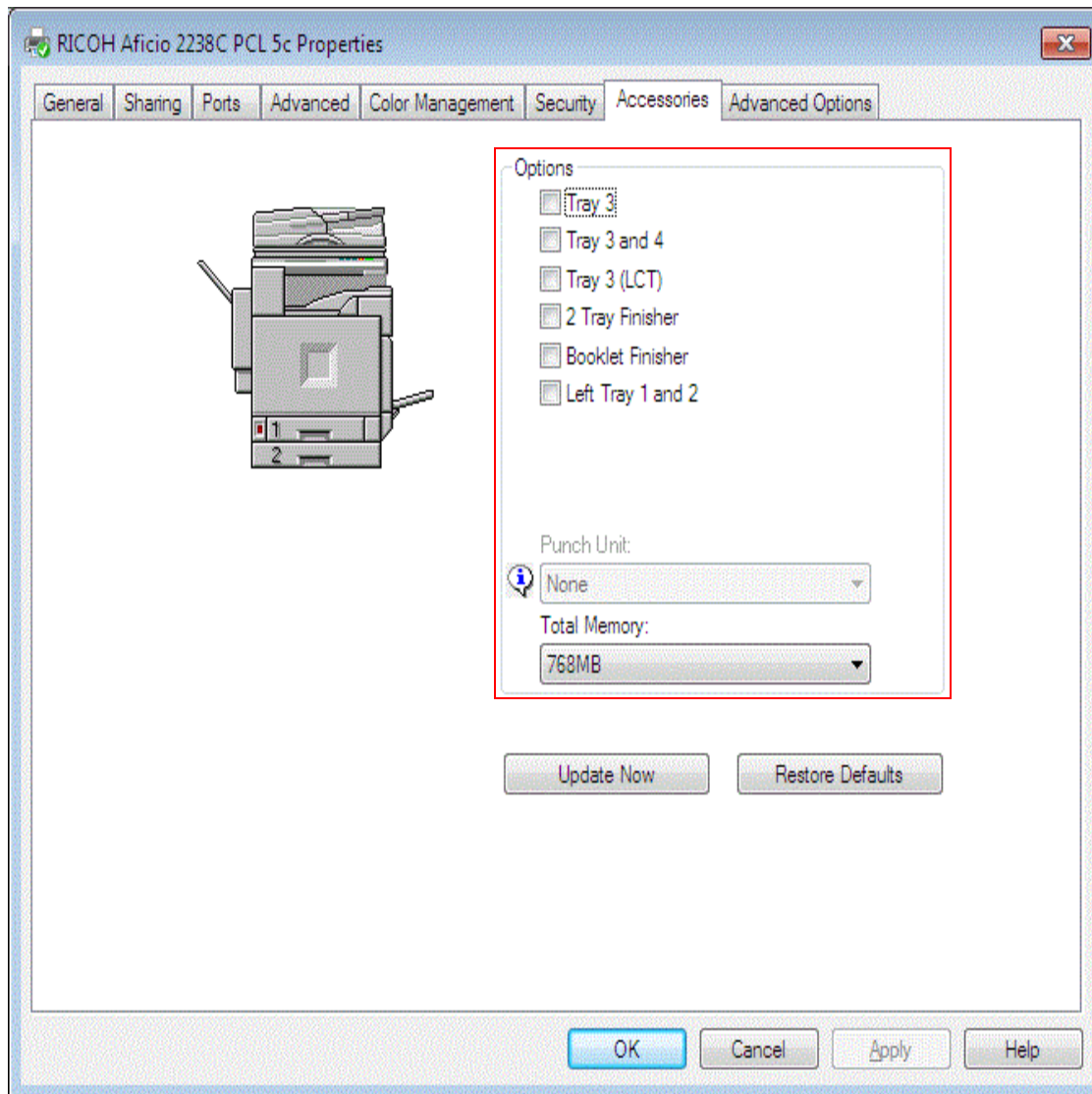
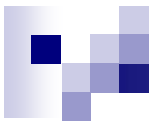
- You should be back in the Devices and Printers Window



Right click on the Printer you just installed and Left click Printer Properties.



If you installed the PCL driver click the Accessories tab.



On this page you will need to click the box next to the options the configuration page you printed earlier has and click OK.



DONE!!!