



Installing Ricoh Driver for Mac OS-X (10.x)



Items you need to know

- IP address of Printer (#1 on the following page)
- Options that are installed (#2 on the following page)
- You will also want to verify your machine has Adobe PostScript installed (#3 on the following page)
- To get all this information you can print a configuration page from the Copier.
 - Hit User Tools, Machine Features (if present)
 - Then Printer Features
 - Then Configuration Page

System Reference

Machine ID	W542L600175	Total Memory	2048 MB
Total Counter	32402		
Firmware Version	Printer[1.13 / D1445572M], System[2.17 / D1445610A], Engine[1.10:04 / D1445114M], LCDC[1.07 / D1441491F], NIB[1.1.104 / D1445563R]		
Device Connection	-		
HDD: Fon/Macro Download	Free Space 2039520 KB , Disk Capacity 2043884 KB		
Printer Language	Adobe PostScript 3 [1.07], Adobe PDF [1.07], RPCS [3.12.25], PCL 5c [1.17], PCL XL [1.17]		
Attached Equipment	Lower Paper Trays, Finisher SR3090		
Consumption Status	Black Toner Remaining: [■■■■]	Cyan Toner Remaining: [■■■■]	
	Magenta Toner Remaining: [■■■■]	Yellow Toner Remaining: [■■■■]	

#3 Adobe Postscript

2 Options

Paper Input

Tray Priority	Tray 1
Bypass Tray	8 1/2 x 11 Plain Paper Tray Locked Duplex Unavailable
Tray 1	11 x 8 1/2 Plain Paper
Tray 2	8 1/2 x 11 Plain Paper
Tray 3	8 1/2 x 14 Plain Paper
Tray 4	11 x 17 Plain Paper Duplex Unavailable

Maintenance

Menu Protect	Level 2	List/Test Print Lock	Off
Auto Del. Temp. Print Jobs	Off	Hours to Delete	8
Auto Del Stored Print Jobs	On	Days to Delete	3
4 Color Graphic Mode	Photo Priority		

* indicates a non-default setting.

System

Print Error Report	Off	Auto Continue	Off
Store and Skip Errored Job	Off	No. of pages to judge jobs	3
Memory Overflow	Do not Print	Job Separation	*On
Rotate by 180 Degrees	Off	Print Compressed Data	Off
Duplex	Off	Copies	1
Blank Page Print	On	Reserved Job Waiting Time	Short Wait
Printer Language	Auto	Sub Paper Size	Auto
Page Size	8 1/2 x 11	Letterhead Setting	Auto Detect
Paper Conf. for Byps. Tray	Do not Display	Bypass Tray	Driver/Command
Tray 1	Machine Setting(s)	Tray 2	*Driver/Command
Tray 3	Machine Setting(s)	Tray 4	Machine Setting(s)
Edge to Edge Print	Off	Default Printer Language	PCL
Tray Switching	Off	Extend Auto Tray Switching	Off
Jobs Not Prntd As Mach Off	Do not Print	Restrict Direct Print Jobs	Off
Switch Initial Screen	*Print Jobs		

PCL Menu

Orientation	Portrait	Form Lines	60
Font Source	Resident	Font Number	0
Point Size	12.00	Font Pitch	10.00
Symbol Set	PC-8	Courier Font	Regular
Extend A4 Width	Off	Append CR to LF	Off
Resolution	600 dpi (Fast)		

PS Menu

Job Timeout	Use Driver/Command	Job Timeout Time (Seconds)	0
Wait Timeout	Use Driver/Command	Wait Timeout Time (Seconds)	300
Switchng btwn 1&2 Side Print	Active	Data Format	TBCP
Resolution	600 dpi (Fast)	Toner Saving	Off
Color Setting	Super Fine	Color Profile	Auto
Process Color Model	Color	Orientation Auto Detect	On
Gray Reproduction	Black/Gray by K (Black)		

PDF Menu

Reverse Order Printing	Off	Resolution	600 dpi (Fast)
Toner Saving	Off	Color Setting	Super Fine
Color Profile	Auto	Process Color Model	Color
Orientation Auto Detect	On		

Host Interface

I/O Buffer	128 KB	I/O Timeout	15 seconds
DHCP	*Off	IPv4 Address	10. 0. 1.250
Sub-net Mask	255.255.255. 0	IPv4 Gateway Address	10. 0. 1. 1
IPv6 Stateless Setting	*Inactive	IPv4	Active
IPv6	Inactive	SMB	*Inactive
Ethernet Speed	Auto Select	Fixed USB Port	Off

#1 IP Address



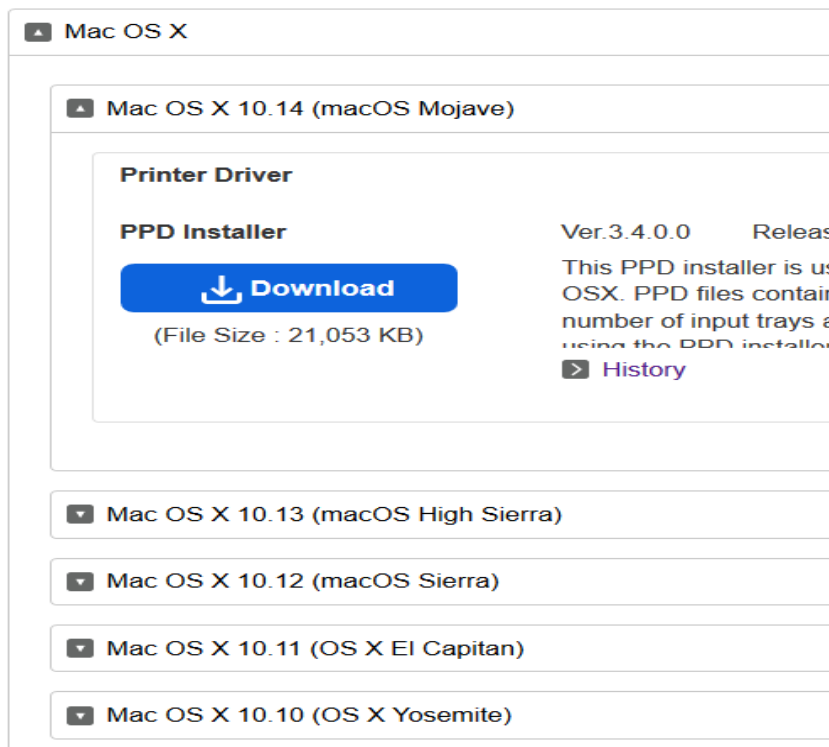
Software you need

Drivers for the machine can be downloaded from Ricoh's Website:

- ❑ <http://www.ricoh-usa.com/downloads>
- ❑ Choose Download Ricoh Drivers & Software
- ❑ You'll see a series of dropdown menus, choose the one that corresponds to your Ricoh device and find your device model in the list or type the model number in the "Search for downloads" field.
- ❑ Once you have chosen your device, agree to the license.

Choosing Your Printer

- ❑ This will load a screen with a series of operating systems to choose from. You'll want to choose your MAC OS. Then click the download button for the PPD Installer.



The screenshot shows a web interface for selecting a printer driver. At the top, there is a dropdown menu for "Mac OS X". Below it, another dropdown menu is open, showing "Mac OS X 10.14 (macOS Mojave)" selected. Underneath, there is a section for "Printer Driver" with a sub-section for "PPD Installer". A blue "Download" button with a downward arrow icon is visible, with the text "(File Size : 21,053 KB)" below it. To the right of the button, the version "Ver.3.4.0.0" and the word "Releas" (likely "Released") are shown. Below this, a short description reads: "This PPD installer is us OSX. PPD files contain number of input trays a using the PPD installer". A "History" link with a right-pointing arrow icon is also present. At the bottom of the interface, there are four more dropdown menus for other Mac OS versions: "Mac OS X 10.13 (macOS High Sierra)", "Mac OS X 10.12 (macOS Sierra)", "Mac OS X 10.11 (OS X El Capitan)", and "Mac OS X 10.10 (OS X Yosemite)".

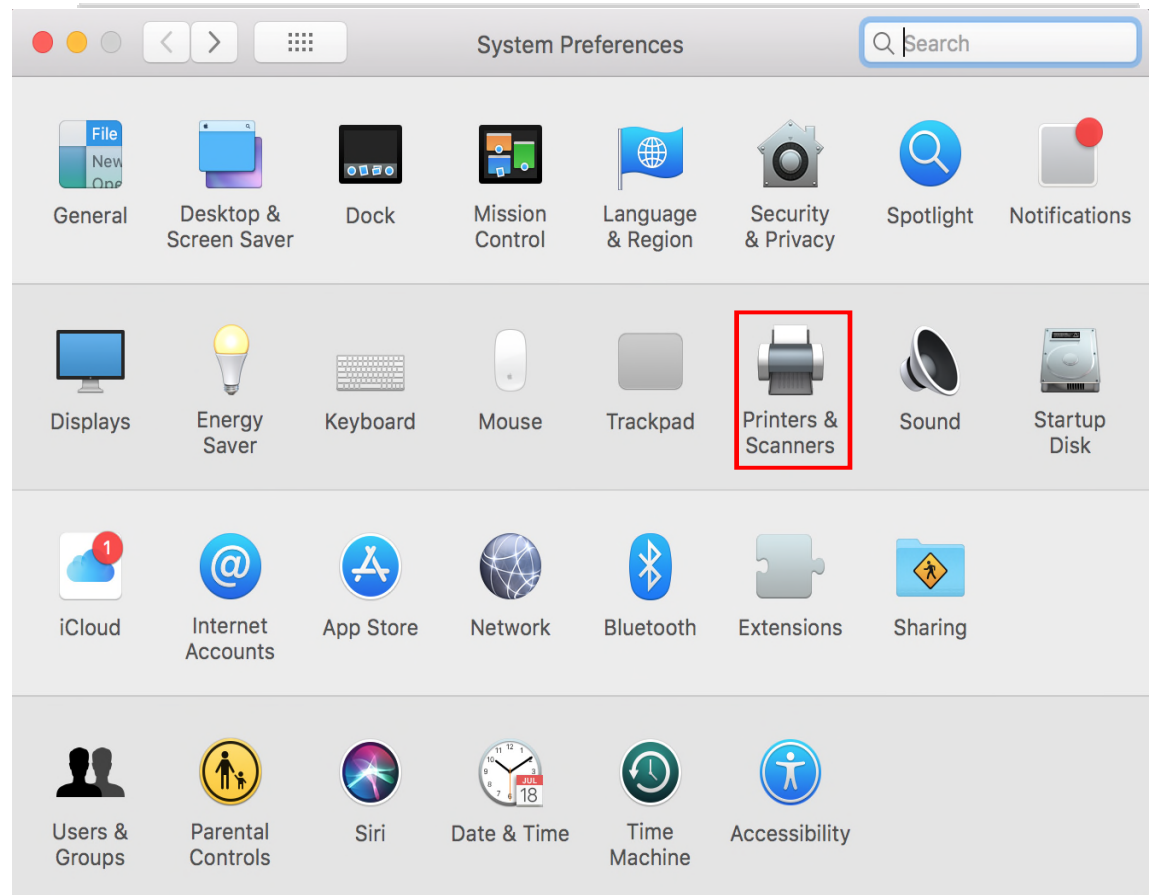


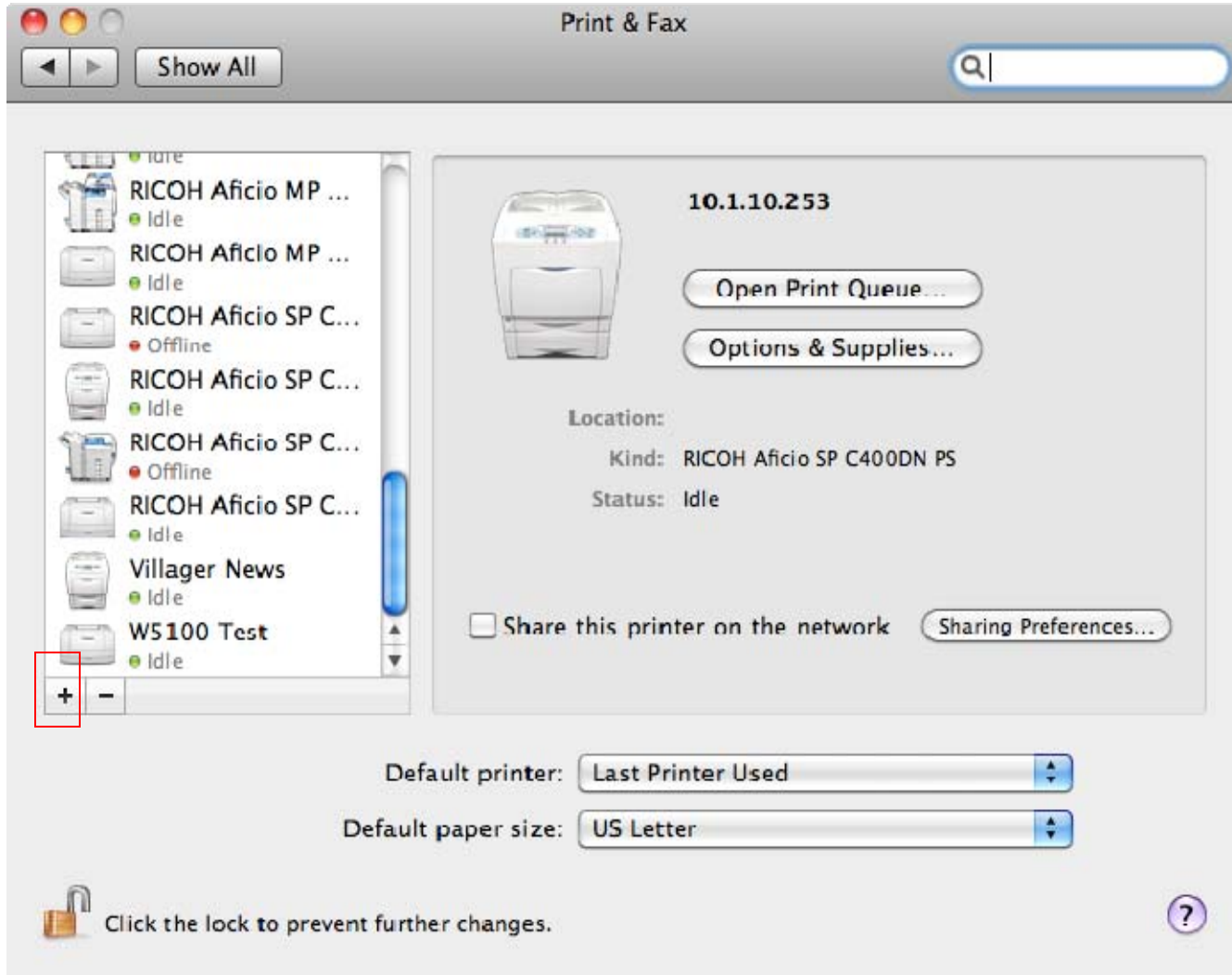
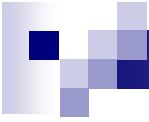
Install the Driver

- ❑ After downloading the driver you should have a new icon on your desktop labeled something like “MacOSX PPD Installer.”
- ❑ Inside this drive you should see a PPD Installer file, run this clicking Continue, Agree, or entering in the appropriate information as needed.

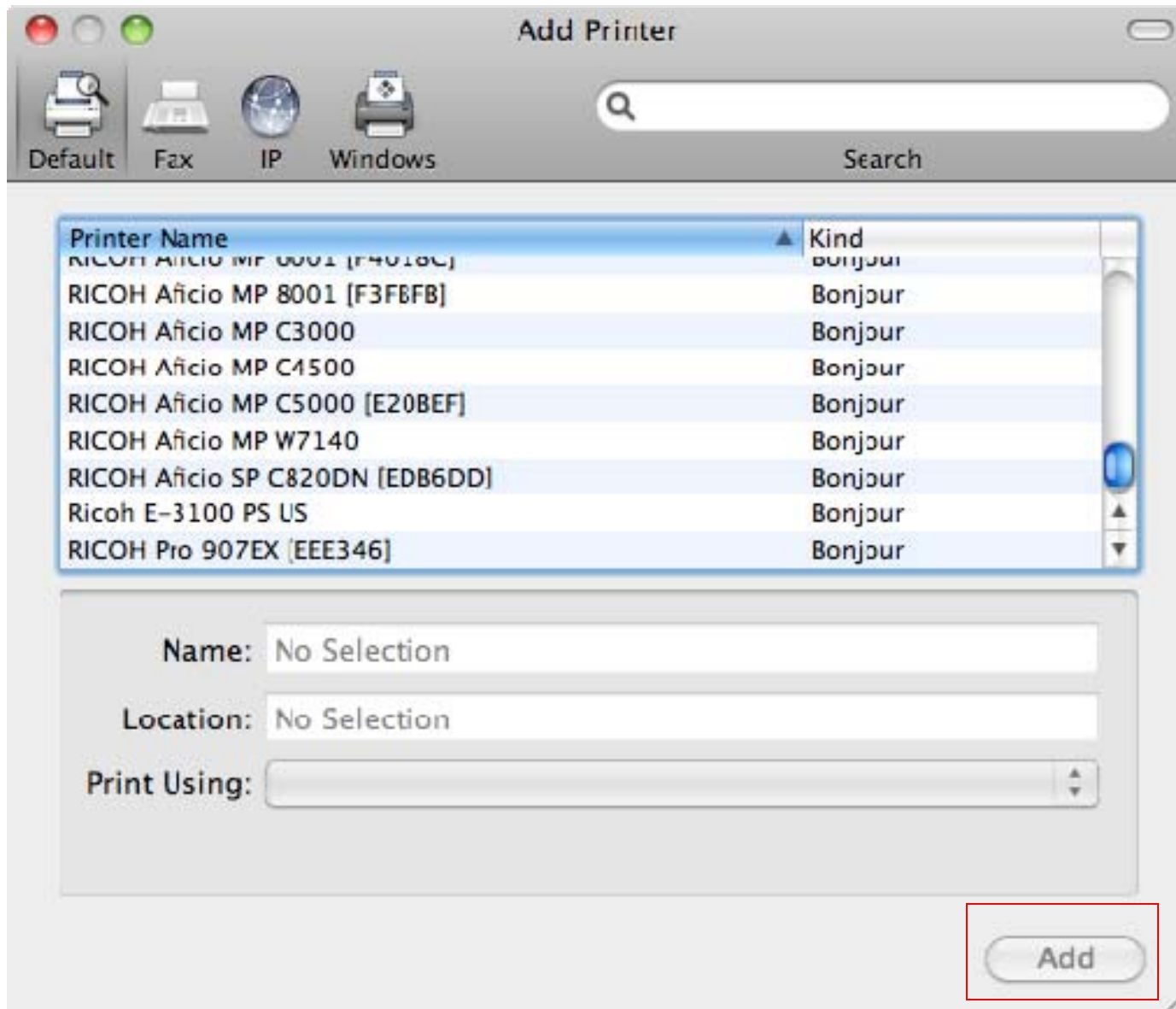
Next Install the Printer Driver

- Open System Preferences (either in the dock or under the apple icon in the upper left corner)
- Then select Printers & Scanners

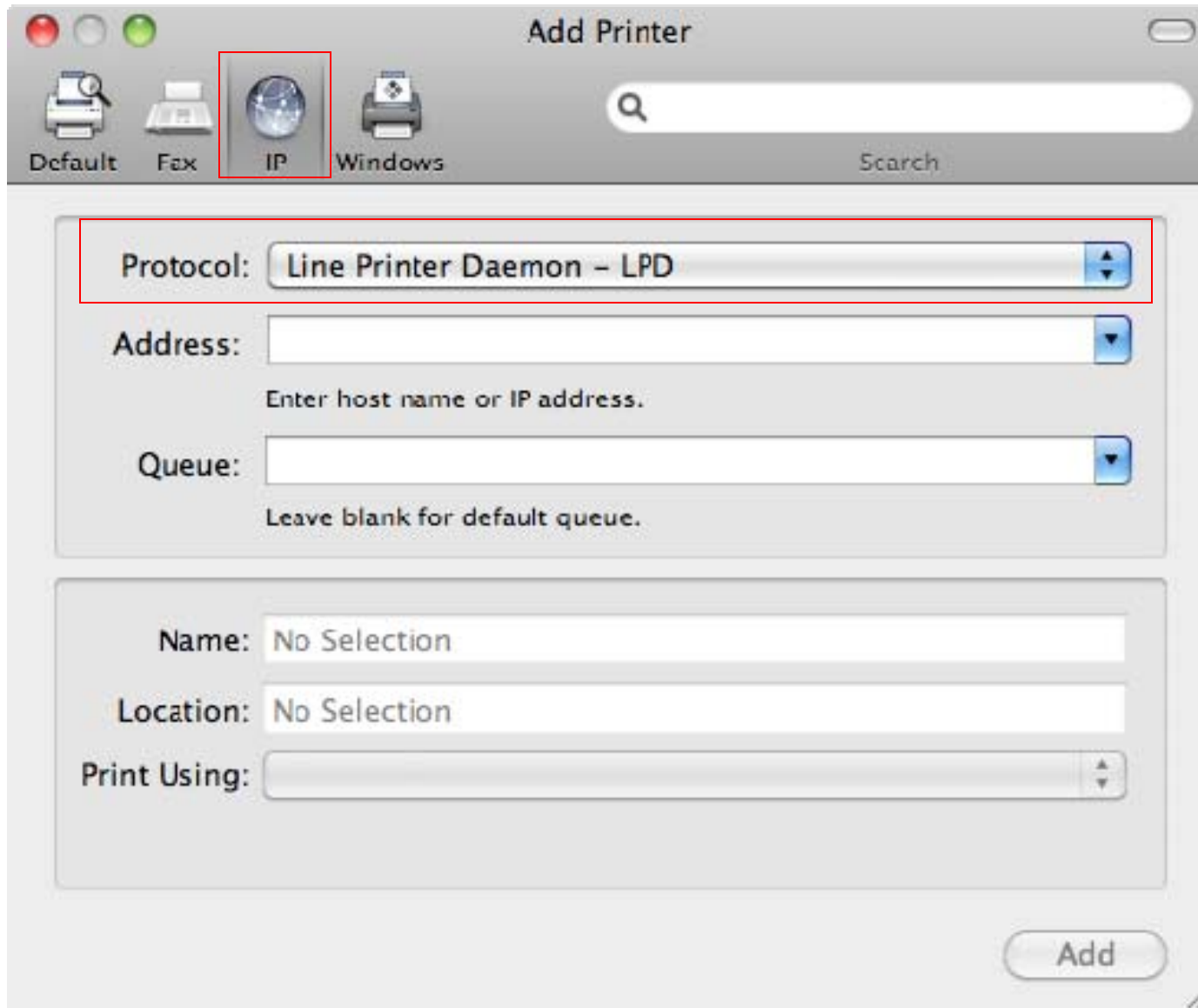




Click on the + icon under your list of printers



You should now have a screen that looks like this, you may see your Ricoh device in the list, you can add it here. But for better results use procedure in next slide.



Click on the IP icon at the top of the window and make sure Line Printer Daemon is chosen in the dropdown.

Protocol: Line Printer Daemon - LPD

Address: 192.168.2.184

Valid and complete address.

Queue:

Leave blank for default queue.

Name: RICOH Aficio MP C3000 PS

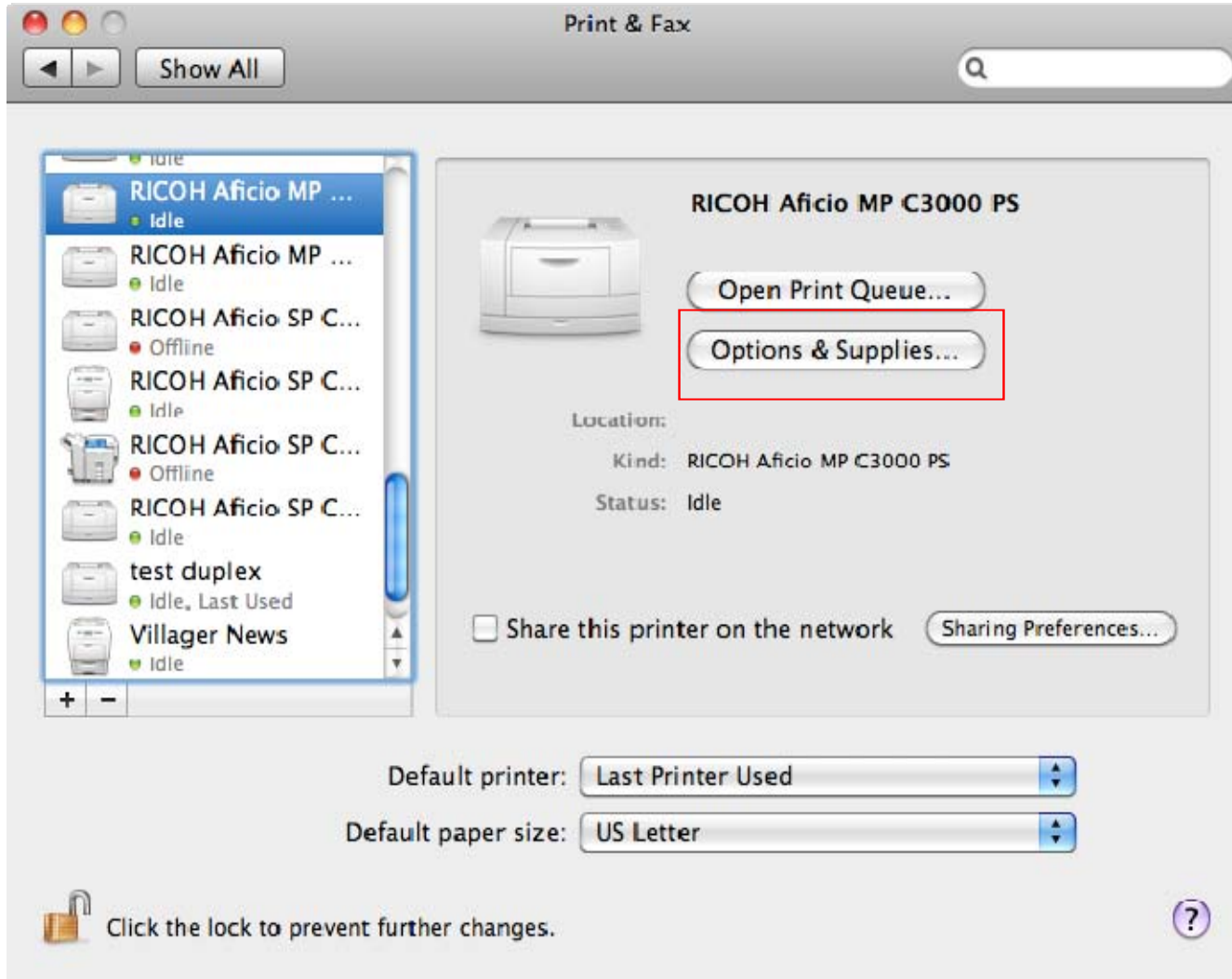
Location:

Print Using: RICOH Aficio MP C3000 PS

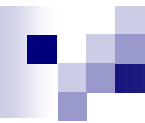
Add

Enter in the IP address you got from page 3 into the Address field making sure to remove any zeros before numbers (I.E. 192.168.002.184 should be entered in as 192.168.2.184)

You will also want to fill in the name you want the printer to be identified as.



Your Ricoh should now be in your list of printers. Select "Options & Supplies".



General Options Supply Levels

To take full advantage of your printer's options, confirm that they are accurately shown here. For information on your printer and its optional hardware, check the printer's documentation.

Option Tray: Lower Paper Trays

Large Capacity Tray: Not Installed

Internal Tray 2: Not Installed

Internal Shift Tray: Not Installed

External Tray: Not Installed

Finisher: Finisher SR3220

PostScript: PostScript Emulation

Cancel OK

Select the "Options" tab and choose the appropriate options for your machine (As shown on Page 3) then click "OK".



DONE!!!